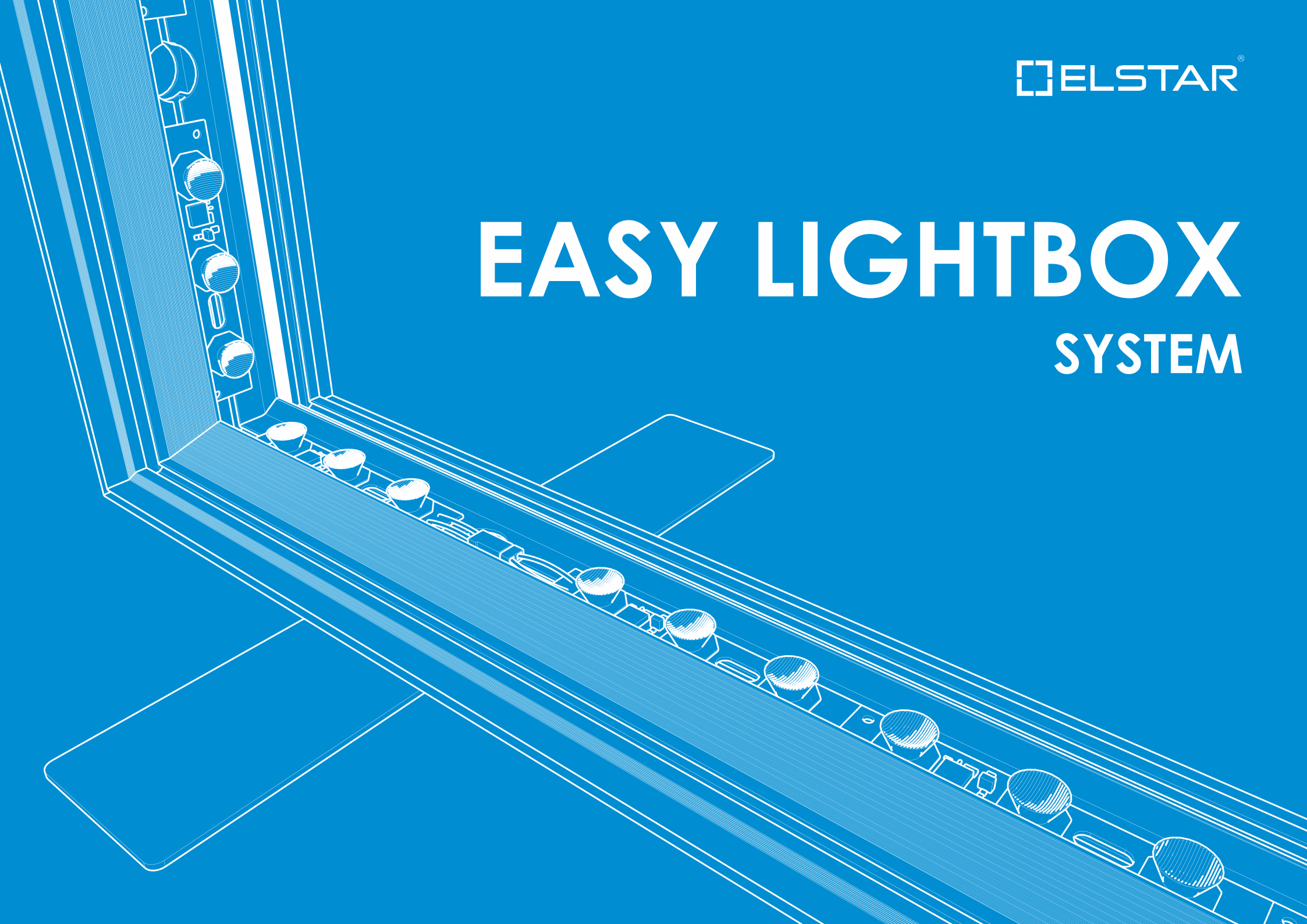


ELSTAR®

EASY LIGHTBOX SYSTEM



The concept

- Easy Lightbox system is a modular exhibition system for creating fair and event illuminated stands.
- The system is based on the idea of multiple use of LED aluminum frames in various configurations.
- The installation is simple and intuitive – without any tools.
- Thanks to changeable graphics printed on the fabrics, easily fixed to the frames, you can build the stand that suits every project.

**EASY
LIGHTBOX**

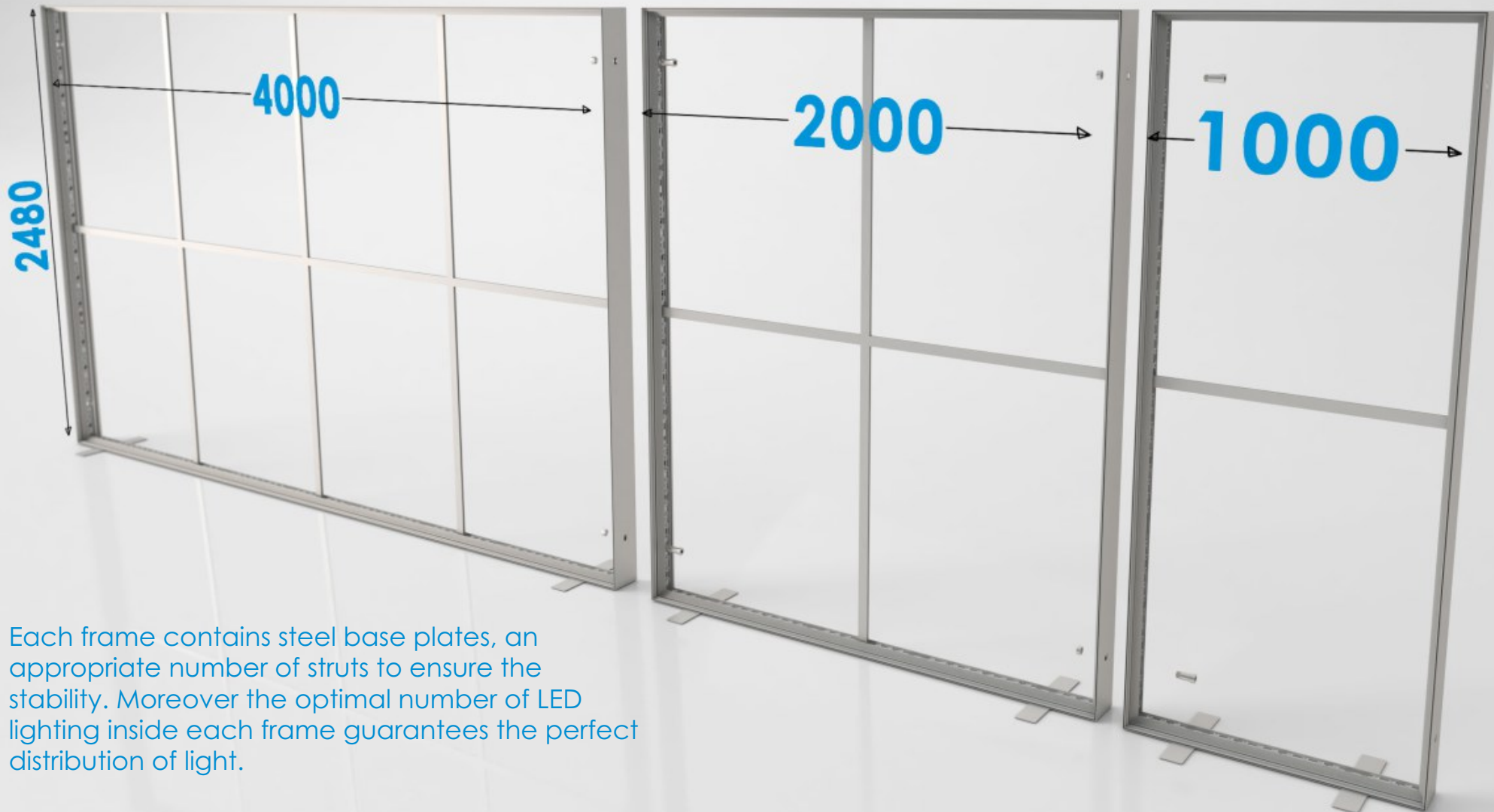
Available modules

Easy Lightbox is a modular exhibition system for creating fair illuminated stands. The frames are available in dimensions:

-1000x2480 mm

-2000x2480 mm

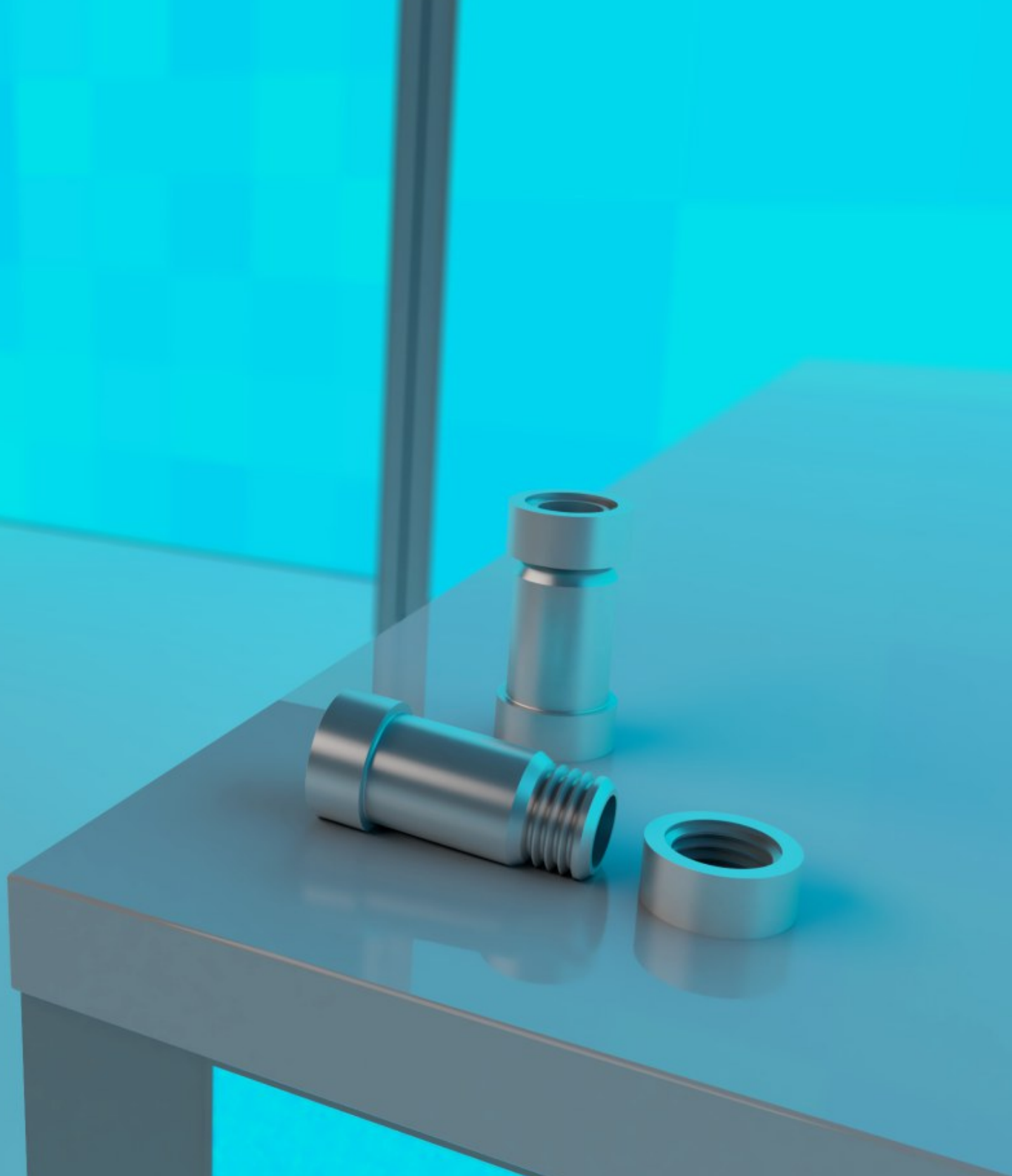
-4000x2480 mm



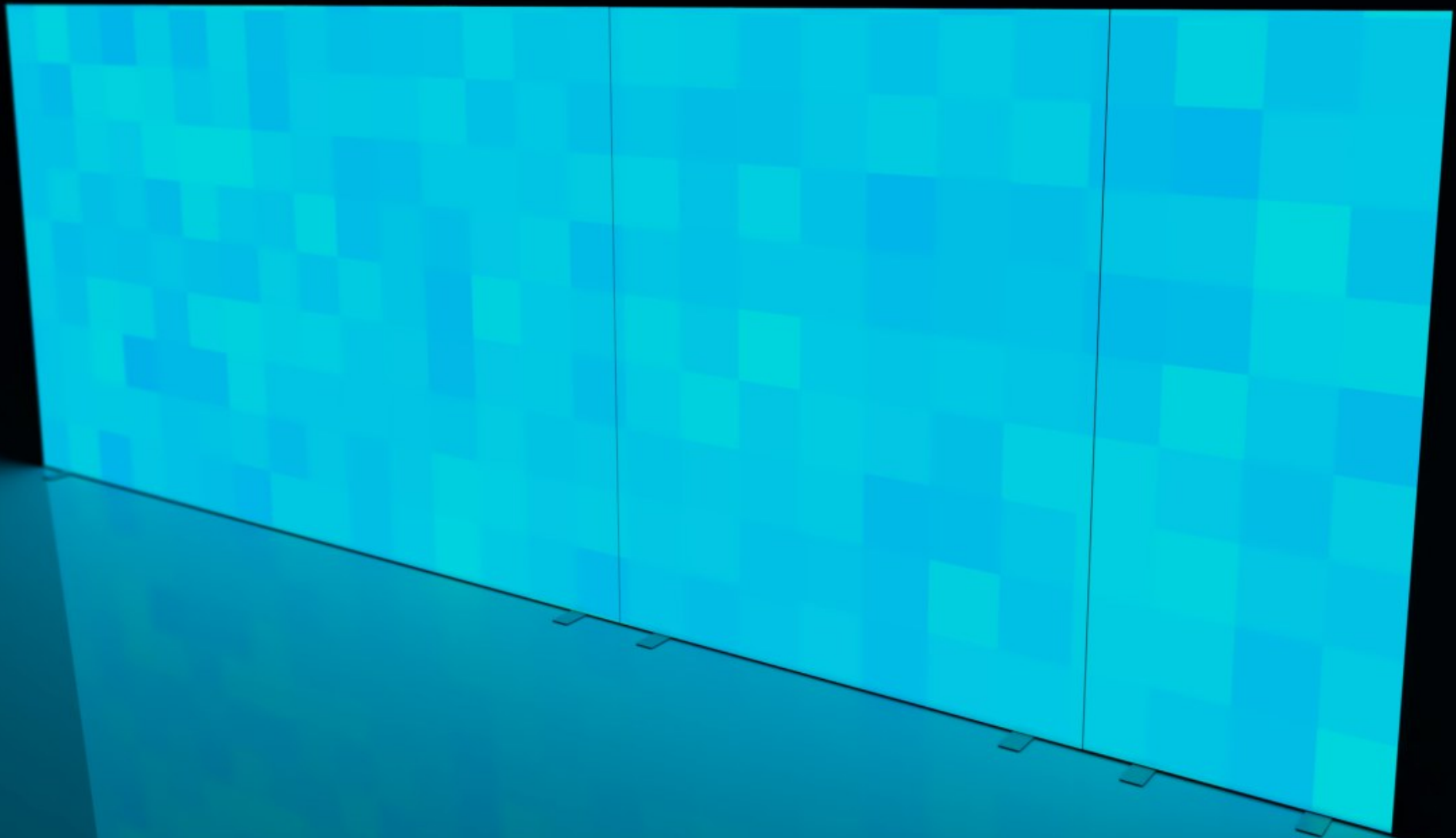
Each frame contains steel base plates, an appropriate number of struts to ensure the stability. Moreover the optimal number of LED lighting inside each frame guarantees the perfect distribution of light.

Tooless assembly

Thanks to the simple connectors and variety of accessories, you can create effective exhibition stand, promotional island etc. All in a very short time, intuitively without any tools.



Light up your large format graphics and strengthen your marketing message with Easy Lightbox frames!

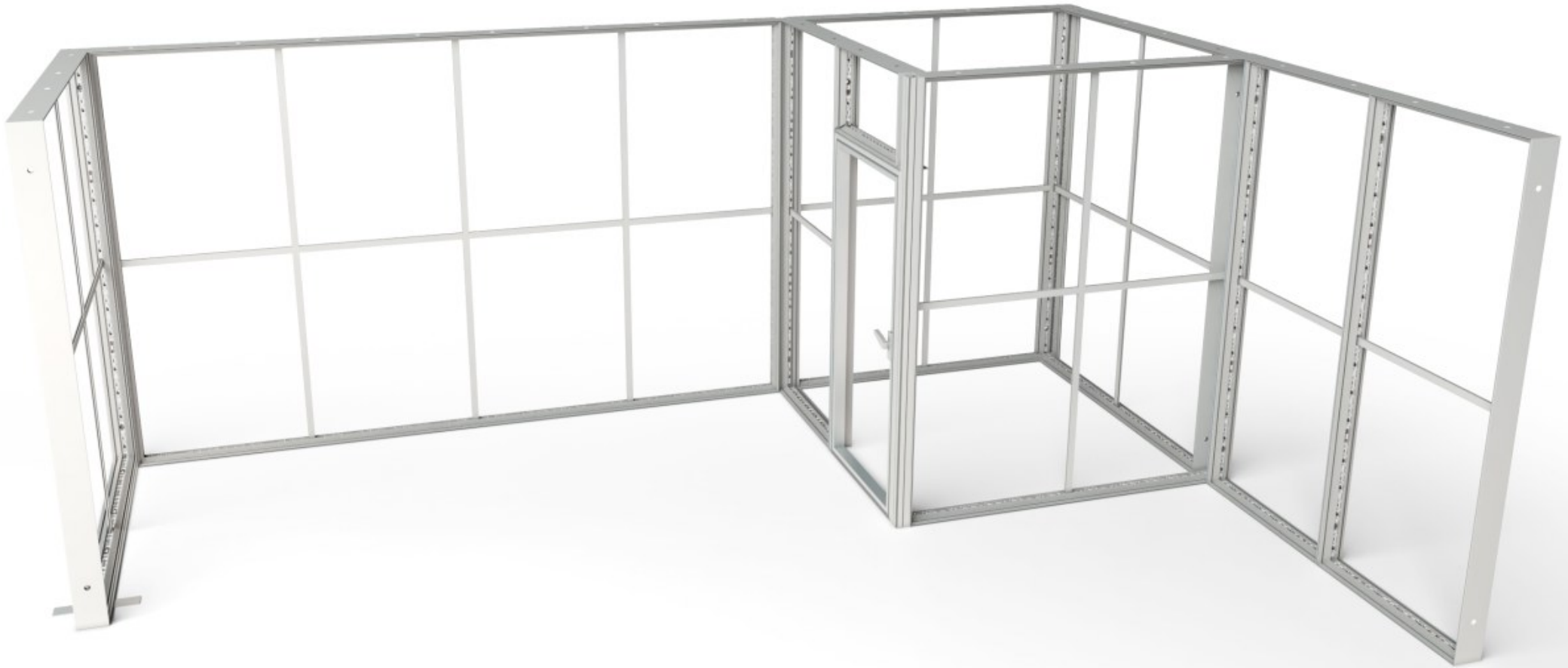


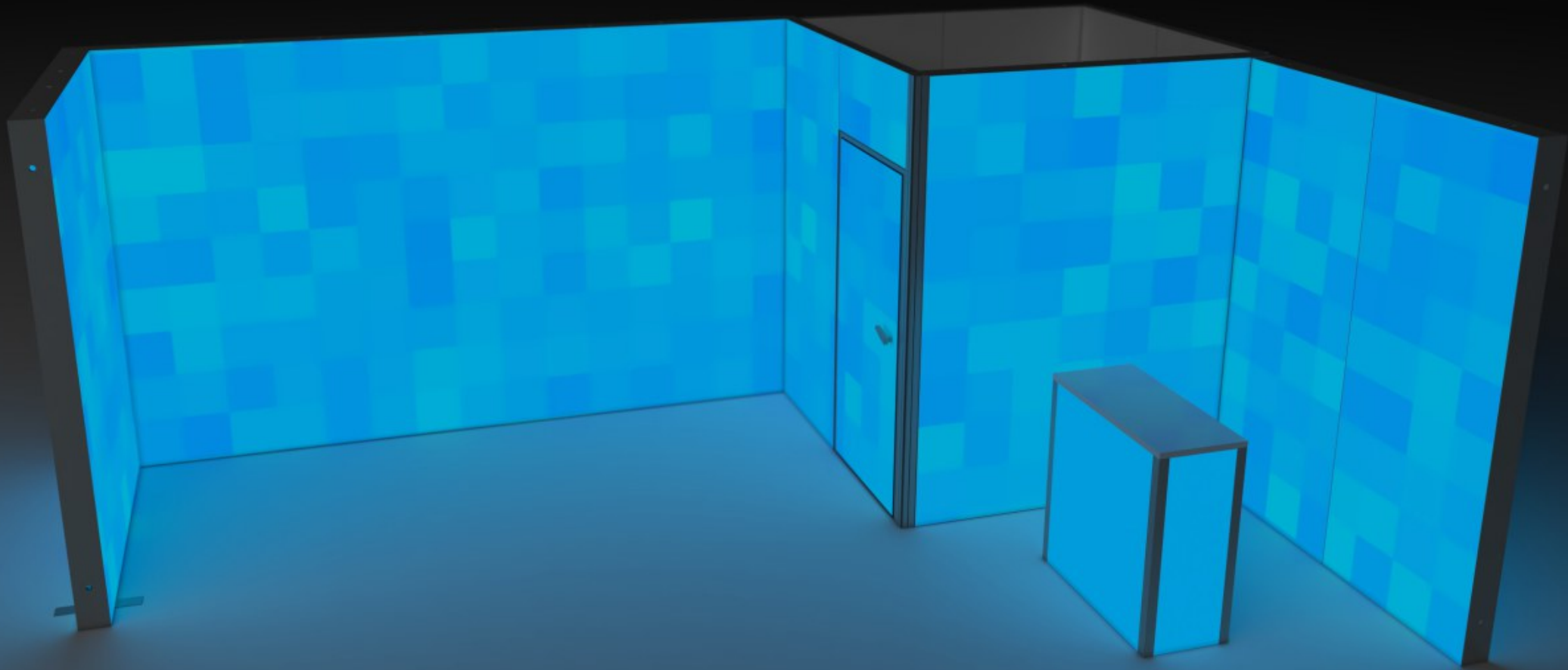


Edge LED lighting

The edge LED strips are fixed to the inside channel of the frame, so the light illuminates the textile graphics from the edge of the frame resulting in a perfect effect.

Enjoy the amazing results of Easy Lightbox system!
A set of frames and illuminated graphics
turned into eye-catching trade show realizations.







ul. Skórzewska 32
62-081 Wysogotowo
Poland

Tel: +48 61 826 82 93

Tel: +48 61 826 83 18

Tel: +48 61 826 13 89

www.elstar-info.com