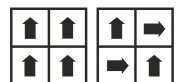


Luxury Carpet Tiles



Manufacturing process Tufting 1/8" Cutpile	Méthode de fabrication Tuftée 1/8" velours coupé	Herstellungsverfahren Getuftet 1/8" Schnittpol	Fabricagemethode Getuft 1/8" gesneden pool
Pile content 100% PP Stainsafe®	Composition du velours 100% PP Stainsafe®	Polmaterial 100% PP Stainsafe®	Pool Samenstelling 100% PP Stainsafe®
Total weight Ca. 4.560 g/m ²	Poids totale Ca. 4.560 g/m ²	Gesamtgewicht Ca. 4.560 g/m ²	Totaal gewicht Ca. 4.560 g/m ²
Pile weight Ca. 1.450 g/m ²	Poids du velours Ca. 1.450 g/m ²	Polgewicht Ca. 1.450 g/m ²	Poolgewicht Ca. 1.450 g/m ²
Total height Ca. 10 mm	Hauteur totale Ca. 10 mm	Gesamthöhe Ca. 10 mm	Totale hoogte Ca. 10 mm
Pile height Ca. 8 mm	Hauteur du velours Ca. 8 mm	Floröhe Ca. 8 mm	Poolhoogte Ca. 8 mm
Tuft density Ca. 122.850/m ²	Nombre de touffes Ca. 122.850/m ²	Noppenzahl Ca. 122.850/m ²	Aantal noppen Ca. 122.850/m ²
Size 50 x 50 cm	Dimensions 50 x 50 cm	Abmessung 50 x 50 cm	Afmetingen 50 x 50 cm
Packaging 3 m ²	Emballage 3 m ²	Verpackung 3 m ²	Verpakking 3 m ²
Antistatique < 2 kV	Antistatique < 2 kV	Antistatisch < 2 kV	Antistatisch < 2 kV
Fire class E _n (EN 13501-1)	Classement feu E _n (EN 13501-1)	Brandverhaltensklasse E _n (EN 13501-1)	Brandklasse E _n (EN 13501-1)
Fastness to light 5-6	Solidité à la lumière 5-6	Lichtechtheit 5-6	Lichtechtheid 5-6
Water fastness 3-4	Solidité à l'eau 3-4	Wasserechtheit 3-4	Waterechtheid 3-4



MAINTENANCE: Spillage should be taken up promptly and surface stains removed by an appropriate method as soon as possible. In heavy traffic areas the carpet should be cleaned daily with a vacuum cleaner. Periodic maintenance should be carried out by professional cleaning staff using appropriate extraction systems. COLOUR MATCHING: As with all textile products there will be a variance in shade from batch to batch. Any samples supplied are as close a representation to the actual carpet as the production process will allow. An exact colour match between different dye batches cannot be guaranteed.



▲ 630



▲ 720



▲ 910



▲ 925

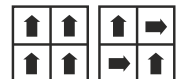


▲ 930



▲ 970

Manufacturing process Tufting 1/10" Cutpile	Méthode de fabrication Tuftée 1/10" velours coupé	Herstellungsverfahren Getuftet 1/10" Schnittpol	Fabricagemethode Getuft 1/10" gesneden pool
Pile content 100% PP Stainsafe®	Composition du velours 100% PP Stainsafe®	Polmaterial 100% PP Stainsafe®	Pool Samenstelling 100% PP Stainsafe®
Total weight Ca. 4.300 g/m ²	Poids totale Ca. 4.300 g/m ²	Gesamtgewicht Ca. 4.300 g/m ²	Totaal gewicht Ca. 4.300 g/m ²
Pile weight Ca. 650 g/m ²	Poids du velours Ca. 650 g/m ²	Polgewicht Ca. 650 g/m ²	Poolgewicht Ca. 650 g/m ²
Total height Ca. 7,2 mm	Hauteur totale Ca. 7,2 mm	Gesamthöhe Ca. 7,2 mm	Totale hoogte Ca. 7,2 mm
Pile height Ca. 4,7 mm	Hauteur du velours Ca. 4,7 mm	Floröhe Ca. 4,7 mm	Poolhoogte Ca. 4,7 mm
Tuft density Ca. 185.650/m ²	Nombre de touffes Ca. 185.650/m ²	Noppenzahl Ca. 185.650/m ²	Aantal noppen Ca. 185.650/m ²
Size 50 x 50 cm	Dimensions 50 x 50 cm	Abmessung 50 x 50 cm	Afmetingen 50 x 50 cm
Packaging 5 m ²	Emballage 5 m ²	Verpackung 5 m ²	Verpakking 5 m ²
Antistatique < 2 kV	Antistatique < 2 kV	Antistatisch < 2 kV	Antistatisch < 2 kV
Fire class E _n (EN 13501-1)	Classement feu E _n (EN 13501-1)	Brandverhaltensklasse E _n (EN 13501-1)	Brandklasse E _n (EN 13501-1)
Fastness to light 5-6	Solidité à la lumière 5-6	Lichtechtheit 5-6	Lichtechtheid 5-6
Water fastness 3-4	Solidité à l'eau 3-4	Wasserechtheit 3-4	Waterrechtheid 3-4





▲ 640



▲ 790



▲ 810



▲ 880



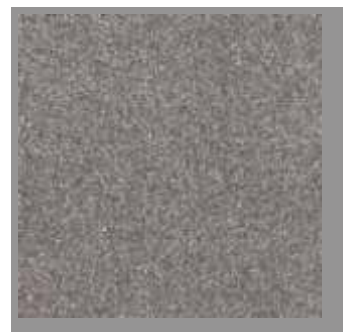
▲ 380



▲ 160

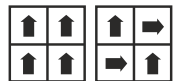


▲ 980



▲ 950

Manufacturing process Tufting 1/10" looppile	Méthode de fabrication Tuftée 1/10" poil bouclé	Herstellungsverfahren Getuftet 1/10" Schlingenpol	Fabricagemethode Getuft 1/10" lussenpool
Pile content 100% PP Stainsafe®	Composition du velours 100% PP Stainsafe®	Polmaterial 100% PP Stainsafe®	Pool Samenstelling 100% PP Stainsafe®
Total weight Ca. 3.725 g/m ²	Poids totale Ca. 3.725 g/m ²	Gesamtgewicht Ca. 3.725 g/m ²	Totaal gewicht Ca. 3.725 g/m ²
Pile weight Ca. 360 g/m ²	Poids du velours Ca. 360 g/m ²	Polgewicht Ca. 360 g/m ²	Poolgewicht Ca. 360 g/m ²
Total height Ca. 5,7 mm	Hauteur totale Ca. 5,7 mm	Gesamthöhe Ca. 5,7 mm	Totale hoogte Ca. 5,7 mm
Pile height Ca. 2,8 mm	Hauteur du velours Ca. 2,8 mm	Florhöhe Ca. 2,8 mm	Poolhoogte Ca. 2,8 mm
Tuft density Ca. 149.600/m ²	Nombre de touffes Ca. 149.600/m ²	Noppenzahl Ca. 149.600/m ²	Aantal noppen Ca. 149.600/m ²
Size 50 x 50 cm	Dimensions 50 x 50 cm	Abmessung 50 x 50 cm	Afmetingen 50 x 50 cm
Packaging 5 m ²	Emballage 5 m ²	Verpackung 5 m ²	Verpakking 5 m ²
Antistatique < 2 kV	Antistatique < 2 kV	Antistatisch < 2 kV	Antistatisch < 2 kV
Fire class C _{fl} -s1 (EN 13501-1)	Classement feu C _{fl} -s1 (EN 13501-1)	Brandverhaltensklasse C _{fl} -s1 (EN 13501-1)	Brandklasse C _{fl} -s1 (EN 13501-1)
Fastness to light 5-6	Solidité à la lumière 5-6	Lichtechtheit 5-6	Lichtechtheid 5-6
Water fastness 4-5	Solidité à l'eau 4-5	Wasserechtheit 4-5	Waterrechtheid 4-5





▲ 319



▲ 107



▲ 595



▲ 553



▲ 942



▲ 155



▲ 983



▲ 382



▲ 966



▲ 822

Manufacturing process Tufting 9/64" looppile	Méthode de fabrication Tuftée 9/64" poil bouclé	Herstellungsverfahren Getuftet 9/64" Schlingenpol	Fabricagemethode Getuft 9/64" lussenpool
Pile content 100% PP Stainsafe®	Composition du velours 100% PP Stainsafe®	Polmaterial 100% PP Stainsafe®	Pool Samenstellung 100% PP Stainsafe®
Total weight Ca. 4.100 g/m ²	Poids totale Ca. 4.100 g/m ²	Gesamtgewicht Ca. 4.100 g/m ²	Totaal gewicht Ca. 4.100 g/m ²
Pile weight Ca. 600 g/m ²	Poids du velours Ca. 600 g/m ²	Polgewicht Ca. 600 g/m ²	Poolgewicht Ca. 600 g/m ²
Total height Ca. 6,5 mm	Hauteur totale Ca. 6,5 mm	Gesamthöhe Ca. 6,5 mm	Totale hoogte Ca. 6,5 mm
Pile height Ca. 3,3 mm	Hauteur du velours Ca. 3,3 mm	Florhöhe Ca. 3,3 mm	Poolhoogte Ca. 3,3 mm
Tuft density Ca. 106.400/m ²	Nombre de touffes Ca. 106.400/m ²	Noppenzahl Ca. 106.400/m ²	Aantal noppen Ca. 106.400/m ²
Size 50 x 50 cm	Dimensions 50 x 50 cm	Abmessung 50 x 50 cm	Afmetingen 50 x 50 cm
Packaging 5 m ²	Emballage 5 m ²	Verpackung 5 m ²	Verpakking 5 m ²
Antistatique < 2 kV	Antistatique < 2 kV	Antistatisch < 2 kV	Antistatisch < 2 kV
Fire class C _{fl} -s1 (EN 13501-1)	Classement feu C _{fl} -s1 (EN 13501-1)	Brandverhaltensklasse C _{fl} -s1 (EN 13501-1)	Brandklasse C _{fl} -s1 (EN 13501-1)
Fastness to light 5-6	Solidité à la lumière 5-6	Lichtechtheit 5-6	Lichtechtheid 5-6
Water fastness 3-4	Solidité à l'eau 3-4	Wasserechtheit 3-4	Waterechtheid 3-4





▲ 103



▲ 858



▲ 500



▲ 965



▲ 900



IMPACT

COLLECTION

IMPACT

Manufacturing process Tufting 1/10" looppile	Méthode de fabrication Tuftée 1/10" poil bouclé	Herstellungsverfahren Getuftet 1/10" Schlingenpol	Fabricatiemethode Getuft 1/10" lussenpool
Pile composition 100% PP Stainsafe®	Composition du velours 100% PP Stainsafe®	Florzusammenstellung 100% PP Stainsafe®	Poolzusammenstellung 100% PP Stainsafe®
Pile weight Ca. 550 g/m ²	Poids du velours Ca. 550 g/m ²	Polgewicht Ca. 550 g/m ²	Poolgewicht Ca. 550 g/m ²
Total weight Ca. 4.300 g/m ²	Poids totale Ca. 4.300 g/m ²	Gesamtgewicht Ca. 4.300 g/m ²	Totaal gewicht Ca. 4.300 g/m ²
Pile height Ca. 4 mm	Hauteur du velours Ca. 4 mm	Florhöhe Ca. 4 mm	Poolhoogte Ca. 4 mm
Tuft density Ca. 185.650/m ²	Nombre de touffes Ca. 185.650/m ²	Noppenzahl Ca. 185.650/m ²	Aantal noppen Ca. 185.650/m ²
Total height Ca. 7 mm	Hauteur totale Ca. 7 mm	Gesamthöhe Ca. 7 mm	Totale hoogte Ca. 7 mm
Size 50 x 50 cm	Dimensions 50 x 50 cm	Abmessung 50 x 50 cm	Afmetingen 50 x 50 cm
Packaging 5 m ²	Emballage 5 m ²	Verpackung 5 m ²	Verpakking 5 m ²
Antistatique < 2 kV	Antistatique < 2 kV	Antistatisch < 2 kV	Antistatisch < 2 kV
Fire class C _{fl} -s1 (EN 13501-1) Centexbel 0493-CPR-0130	Classement feu C _{fl} -s1 (EN 13501-1) Centexbel 0493-CPR-0130	Brandverhaltensklasse C _{fl} -s1 (EN 13501-1) Centexbel 0493-CPR-0130	Brandklasse C _{fl} -s1 (EN 13501-1) Centexbel 0493-CPR-0130
Sound insulation 22 dB	Isolation aux bruits d'impact 22 dB	Trittschalldämmung 22 dB	Geluidsisolatie 22 dB
Fastness to light 5-6	Solidité à la lumière 5-6	Lichtechtheit 5-6	Lichtechtheid 5-6
Water fastness 4-5	Solidité à l'eau 4-5	Wasserechtheit 4-5	Waterechtheid 4-5

EN 14041

16

Balta Industries - Wakkensteenweg 2
BE - 8710 Sint-Baafs-Vijve

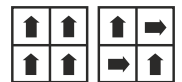
DOP: 1010#BIOACL

Textile Floor Covering EN 1307
Notified body 0493

www.baltamediabank.com

90CF84A0

www.pro.dix.spa



MAINTENANCE: Spillage should be taken up promptly and surface stains removed by an appropriate method as soon as possible. In heavy traffic areas the carpet should be cleaned daily with a vacuum cleaner. Periodic maintenance should be carried out by professional cleaning staff using appropriate extraction systems. COLOUR MARCHING: As with all textile products there will be a variance in shade from batch to batch. Any samples supplied are as close a representation to the actual carpet as the production process will allow. An exact colour match between different dye batches cannot be guaranteed.

Balta Carpet Tiles • Zevensterrestraat 21 • B-9240 Zele • Tel. +32 (0)52 80 80 80 • www.baltagroup.com

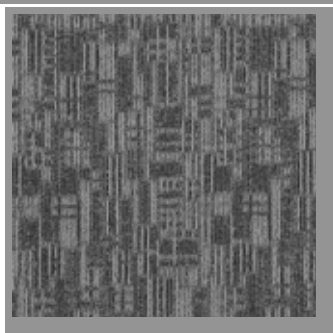


IMPACT
COLLECTION

IMPACT



▲ 955



▲ 985



IMPACT

COLLECTION IMPRESSION

Manufacturing process Tufting 1/10" looppile	Méthode de fabrication Tuftée 1/10" poil bouclé	Herstellungsverfahren Getuftet 1/10" Schlingenpol	Fabricatiemethode Getuft 1/10" lussenpool
Pile composition 100% PP Stainsafe®	Composition du velours 100% PP Stainsafe®	Florzusammenstellung 100% PP Stainsafe®	Pool Samenstellung 100% PP Stainsafe®
Pile weight Ca. 550 g/m ²	Poids du velours Ca. 550 g/m ²	Polgewicht Ca. 550 g/m ²	Poolgewicht Ca. 550 g/m ²
Total weight Ca. 4.300 g/m ²	Poids totale Ca. 4.300 g/m ²	Gesamtgewicht Ca. 4.300 g/m ²	Totaal gewicht Ca. 4.300 g/m ²
Pile height Ca. 4 mm	Hauteur du velours Ca. 4 mm	Florhöhe Ca. 4 mm	Poolhoogte Ca. 4 mm
Tuft density Ca. 185.650/m ²	Nombre de touffes Ca. 185.650/m ²	Noppenzahl Ca. 185.650/m ²	Aantal noppen Ca. 185.650/m ²
Total height Ca. 7 mm	Hauteur totale Ca. 7 mm	Gesamthöhe Ca. 7 mm	Totale hoogte Ca. 7 mm
Size 50 x 50 cm	Dimensions 50 x 50 cm	Abmessung 50 x 50 cm	Afmetingen 50 x 50 cm
Packaging 5 m ²	Emballage 5 m ²	Verpackung 5 m ²	Verpakking 5 m ²
Antistatique < 2 kV	Antistatique < 2 kV	Antistatisch < 2 kV	Antistatisch < 2 kV
Fire class C _{fl} -s1 (EN 13501-1) Centexbel 0493-CPR-0130	Classement feu C _{fl} -s1 (EN 13501-1) Centexbel 0493-CPR-0130	Brandverhaltensklasse C _{fl} -s1 (EN 13501-1) Centexbel 0493-CPR-0130	Brandklasse C _{fl} -s1 (EN 13501-1) Centexbel 0493-CPR-0130
Sound insulation 22 dB	Isolation aux bruits d'impact 22 dB	Trittschalldämmung 22 dB	Geluidsisolatie 22 dB
Fastness to light 5-6	Solidité à la lumière 5-6	Lichtechtheit 5-6	Lichtechtheid 5-6
Water fastness 4-5	Solidité à l'eau 4-5	Wasserechtheit 4-5	Waterechtheid 4-5

EN 14041

CE

16

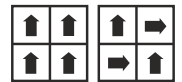
Balta Industries - Wakkensteenweg 2
BE - 8710 Sint-Baafs-Vijve

DOP: 1010#BIOACL

Textile Floor Covering EN 1307
Notified body 0493

DL NA PCP HCHO TS

www.baltamediabank.com

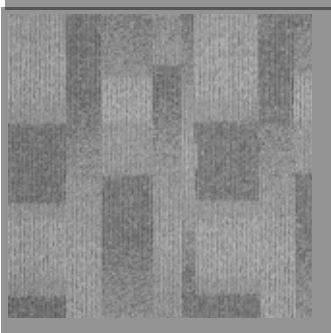


MAINTENANCE: Spillage should be taken up promptly and surface stains removed by an appropriate method as soon as possible. In heavy traffic areas the carpet should be cleaned daily with a vacuum cleaner. Periodic maintenance should be carried out by professional cleaning staff using appropriate extraction systems.
COLOUR MARCHING: As with all textile products there will be a variance in shade from batch to batch. Any samples supplied are as close a representation to the actual carpet as the production process will allow. An exact colour match between different dye batches cannot be guaranteed.

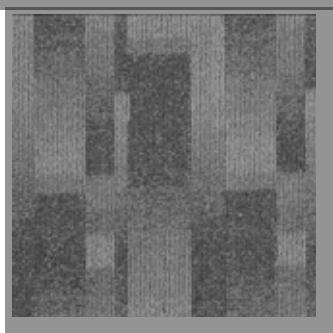


IMPACT

COLLECTION IMPRESSION



▲ 955



▲ 985



IMPACT

COLLECTION LINEATIONS

Manufacturing process Tufting 1/10" looppile	Méthode de fabrication Tuftée 1/10" poil bouclé	Herstellungsverfahren Getuftet 1/10" Schlingenpol	Fabricatiemethode Getuft 1/10" lussenpool
Pile content 100% PP Stainsafe®	Composition du velours 100% PP Stainsafe®	Polmaterial 100% PP Fleckweg®	Pool Samenstelling 100% PP Stainsafe®
Pile weight Ca. 550 g/m ²	Poids du velours Ca. 550 g/m ²	Polgewicht Ca. 550 g/m ²	Poolgewicht Ca. 550 g/m ²
Total weight Ca. 4.300 g/m ²	Poids totale Ca. 4.300 g/m ²	Gesamtgewicht Ca. 4.300 g/m ²	Totaal gewicht Ca. 4.300 g/m ²
Pile height Ca. 5 mm	Hauteur du velours Ca. 5 mm	Florhöhe Ca. 5 mm	Poolhoogte Ca. 5 mm
Total height Ca. 7 mm	Hauteur totale Ca. 7 mm	Gesamthöhe Ca. 7 mm	Totale hoogte Ca. 7 mm
Tuft density Ca. 189.120/m ²	Nombre de touffes Ca. 189.120/m ²	Noppenzahl Ca. 189.120/m ²	Aantal noppen Ca. 189.120/m ²
Size 50 x 50 cm	Dimensions 50 x 50 cm	Abmessung 50 x 50 cm	Afmetingen 50 x 50 cm
Packaging 5 m ²	Emballage 5 m ²	Verpackung 5 m ²	Verpakking 5 m ²
Antistatique < 2 kV	Antistatique < 2 kV	Antistatisch < 2 kV	Antistatisch < 2 kV
Fire class C _η -s1 (EN 13501-1) Centexbel 0493-CPR-0130	Classement feu C _η -s1 (EN 13501-1) Centexbel 0493-CPR-0130	Brandverhaltensklasse C _η -s1 (EN 13501-1) Centexbel 0493-CPR-0130	Brandklasse C _η -s1 (EN 13501-1) Centexbel 0493-CPR-0130
Sound insulation 22 dB	Isolation aux bruits d'impact 22 dB	Trittschalldämmung 22 dB	Geluidsisolatie 22 dB
Fastness to light 5-6	Solidité à la lumière 5-6	Lichtechtheit 5-6	Lichtechtheid 5-6
Water fastness 4-5	Solidité à l'eau 4-5	Wasserechtheit 4-5	Waterrechtheid 4-5



MAINTENANCE: Spillage should be taken up promptly and surface stains removed by an appropriate method as soon as possible. In heavy traffic areas the carpet should be cleaned daily with a vacuum cleaner. Periodic maintenance should be carried out by professional cleaning staff using appropriate extraction systems.
COLOUR MARCHING: As with all textile products there will be a variance in shade from batch to batch. Any samples supplied are as close a representation to the actual carpet as the production process will allow. An exact colour match between different dye batches cannot be guaranteed.



IMPACT

COLLECTION LINEATIONS



▲ 380



▲ 880



▲ 900



▲ 980



IMPACT

COLLECTION ZENIT

Manufacturing process Tufting 1/10" looppile	Méthode de fabrication Tuftée 1/10" poil bouclé	Herstellungsverfahren Getuftet 1/10" Schlingenpol	Fabricatiemethode Getuft 1/10" lussenpool
Pile content 100% PP Stainsafe®	Composition du velours 100% PP Stainsafe®	Polmaterial 100% PP Fleckweg®	Pool Samenstelling 100% PP Stainsafe®
Pile weight Ca. 550 g/m ²	Poids du velours Ca. 550 g/m ²	Polgewicht Ca. 550 g/m ²	Poolgewicht Ca. 550 g/m ²
Total weight Ca. 4.300 g/m ²	Poids totale Ca. 4.300 g/m ²	Gesamtgewicht Ca. 4.300 g/m ²	Totaal gewicht Ca. 4.300 g/m ²
Pile height Ca. 4 mm	Hauteur du velours Ca. 4 mm	Florhöhe Ca. 4 mm	Poolhoogte Ca. 4 mm
Tuft density Ca. 212.760/m ²	Nombre de touffes Ca. 212.760/m ²	Noppenzahl Ca. 212.760/m ²	Aantal noppen Ca. 212.760/m ²
Total height Ca. 7 mm	Hauteur totale Ca. 7 mm	Gesamthöhe Ca. 7 mm	Totale hoogte Ca. 7 mm
Size 50 x 50 cm	Dimensions 50 x 50 cm	Abmessung 50 x 50 cm	Afmetingen 50 x 50 cm
Packaging 5 m ²	Emballage 5 m ²	Verpackung 5 m ²	Verpakking 5 m ²
Antistatique < 2 kV	Antistatique < 2 kV	Antistatisch < 2 kV	Antistatisch < 2 kV
Fire class C _{fl} -s1 (EN 13501-1) Centexbel 0493-CPR-0130	Classement feu C _{fl} -s1 (EN 13501-1) Centexbel 0493-CPR-0130	Brandverhaltensklasse C _{fl} -s1 (EN 13501-1) Centexbel 0493-CPR-0130	Brandklasse C _{fl} -s1 (EN 13501-1) Centexbel 0493-CPR-0130
Sound insulation 22 dB	Isolation aux bruits d'impact 22 dB	Trittschalldämmung 22 dB	Geluidsisolatie 22 dB
Fastness to light 5-6	Solidité à la lumière 5-6	Lichtechtheit 5-6	Lichtechtheid 5-6
Water fastness 4-5	Solidité à l'eau 4-5	Wasserechtheit 4-5	Waterechtheid 4-5

EN 14041

CE

13

Balta Industries - Wakkensteenweg 2
BE - 8710 Sint-Baafs-Vijve

DOP: 1010#BIOACL

Textile Floor Covering EN 1307
Notified body 0493

www.baltamediaibank.com

90CF84A0

www.pro.dix.be

EMISSIONS DANS L'AIR INTÉRIEUR

A+

A+ A B C

StainSafe
www.stain-safe.com

EAC

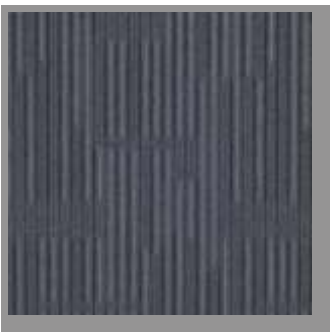
balta
carpet tiles

MAINTENANCE: Spillage should be taken up promptly and surface stains removed by an appropriate method as soon as possible. In heavy traffic areas the carpet should be cleaned daily with a vacuum cleaner. Periodic maintenance should be carried out by professional cleaning staff using appropriate extraction systems.
COLOUR MARCHING: As with all textile products there will be a variance in shade from batch to batch. Any samples supplied are as close a representation to the actual carpet as the production process will allow. An exact colour match between different dye batches cannot be guaranteed.

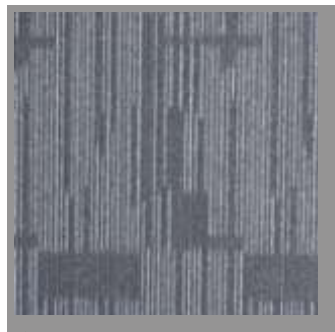


IMPACT

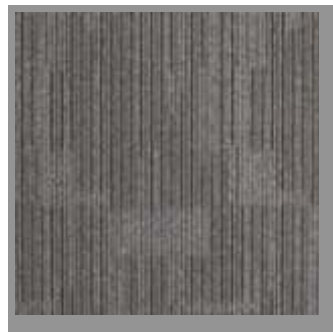
COLLECTION ZENIT



▲ 380



▲ 900



▲ 980



▲ 880



MINERAL QUARTZ

COLLECTION

Manufacturing process Tufting 1/10" looppile	Méthode de fabrication Tuftée 1/10" poil bouclé	Herstellungsverfahren Getuftet 1/10" Schlingenpol	Fabricatiemethode Getuft 1/10" lussenpool
Pile content 100% PP Stainsafe®	Composition du velours 100% PP Stainsafe®	Polmaterial 100% PP Fleckweg®	Pool Samenstelling 100% PP Stainsafe®
Pile weight Ca. 550 g/m ²	Poids du velours Ca. 550 g/m ²	Polgewicht Ca. 550 g/m ²	Poolgewicht Ca. 550 g/m ²
Total weight Ca. 4.300 g/m ²	Poids totale Ca. 4.300 g/m ²	Gesamtgewicht Ca. 4.300 g/m ²	Totaal gewicht Ca. 4.300 g/m ²
Pile height Ca. 4 mm	Hauteur du velours Ca. 4 mm	Florhöhe Ca. 4 mm	Poolhoogte Ca. 4 mm
Total height Ca. 7 mm	Hauteur totale Ca. 7 mm	Gesamthöhe Ca. 7 mm	Totale hoogte Ca. 7 mm
Tuft density Ca. 212.760/m ²	Nombre de touffes Ca. 212.760/m ²	Noppenzahl Ca. 212.760/m ²	Aantal noppen Ca. 212.760/m ²
Size 50 x 50 cm	Dimensions 50 x 50 cm	Abmessung 50 x 50 cm	Afmetingen 50 x 50 cm
Packaging 5 m ²	Emballage 5 m ²	Verpackung 5 m ²	Verpakking 5 m ²
Antistatique < 2 kV	Antistatique < 2 kV	Antistatisch < 2 kV	Antistatisch < 2 kV
Fire class C _{fl} -s1 (EN 13501-1) Centexbel 0493-CPR-0130	Classement feu C _{fl} -s1 (EN 13501-1) Centexbel 0493-CPR-0130	Brandverhaltensklasse C _{fl} -s1 (EN 13501-1) Centexbel 0493-CPR-0130	Brandklasse C _{fl} -s1 (EN 13501-1) Centexbel 0493-CPR-0130
Sound insulation 22 dB	Isolation aux bruits d'impact 22 dB	Trittschalldämmung 22 dB	Geluidisolatie 22 dB
Fastness to light 5-6	Solidité à la lumière 5-6	Lichtechtheit 5-6	Lichtechtheid 5-6
Water fastness 4-5	Solidité à l'eau 4-5	Wasserechtheit 4-5	Waterechtheid 4-5

QUARTZ	185	685	945	965
Stock	✓	✓	✓	✓

EN 14041

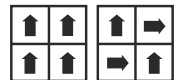
16

Balta Industries - Wakkensteenweg 2
BE - 8710 Sint-Baafs-Vijve

DOP: 1010#BIOACL

Textile Floor Covering EN 1307
Notified body 0493

www.baltamediabank.com



MAINTENANCE: Spillage should be taken up promptly and surface stains removed by an appropriate method as soon as possible. In heavy traffic areas the carpet should be cleaned daily with a vacuum cleaner. Periodic maintenance should be carried out by professional cleaning staff using appropriate extraction systems. COLOUR MARCHING: As with all textile products there will be a variance in shade from batch to batch. Any samples supplied are as close a representation to the actual carpet as the production process will allow. An exact colour match between different dye batches cannot be guaranteed.



MINERAL

COLLECTION QUARTZ



▲ 185



▲ 685



▲ 945



▲ 965



POWER ENERGY

COLLECTION

Manufacturing process Tufting 1/10" looppile	Méthode de fabrication Tuftée 1/10" poil bouclé	Herstellungsverfahren Getuftet 1/10" Schlingenpol	Fabricatiemethode Getuft 1/10" lussenpool
Pile content 100% PP Stainsafe®	Composition du velours 100% PP Stainsafe®	Polmaterial 100% PP Fleckweg®	Pool Samenstelling 100% PP Stainsafe®
Pile weight Ca. 550 g/m ²	Poids du velours Ca. 550 g/m ²	Polgewicht Ca. 550 g/m ²	Poolgewicht Ca. 550 g/m ²
Total weight Ca. 4.300 g/m ²	Poids totale Ca. 4.300 g/m ²	Gesamtgewicht Ca. 4.300 g/m ²	Totaal gewicht Ca. 4.300 g/m ²
Pile height Ca. 4 mm	Hauteur du velours Ca. 4 mm	Florhöhe Ca. 4 mm	Poolhoogte Ca. 4 mm
Total height Ca. 7 mm	Hauteur totale Ca. 7 mm	Gesamthöhe Ca. 7 mm	Totale hoogte Ca. 7 mm
Tuft density Ca. 212.760/m ²	Nombre de touffes Ca. 212.760/m ²	Noppenzahl Ca. 212.760/m ²	Aantal noppen Ca. 212.760/m ²
Size 50 x 50 cm	Dimensions 50 x 50 cm	Abmessung 50 x 50 cm	Afmetingen 50 x 50 cm
Packaging 5 m ²	Emballage 5 m ²	Verpackung 5 m ²	Verpakking 5 m ²
Antistatique < 2 kV	Antistatique < 2 kV	Antistatisch < 2 kV	Antistatisch < 2 kV
Fire class C _{fl} -s1 (EN 13501-1) Centexbel 0493-CPR-0130	Classement feu C _{fl} -s1 (EN 13501-1) Centexbel 0493-CPR-0130	Brandverhaltensklasse C _{fl} -s1 (EN 13501-1) Centexbel 0493-CPR-0130	Brandklasse C _{fl} -s1 (EN 13501-1) Centexbel 0493-CPR-0130
Sound insulation 22 dB	Isolation aux bruits d'impact 22 dB	Trittschalldämmung 22 dB	Geluidsisolatie 22 dB
Fastness to light 5-6	Solidité à la lumière 5-6	Lichtechtheit 5-6	Lichtechtheid 5-6
Water fastness 4-5	Solidité à l'eau 4-5	Wasserechtheit 4-5	Waterechtheid 4-5

ENERGY	380	990
Stock	✓	✓

EN 14041

16

Balta Industries - Wakkensteenweg 2
BE - 8710 Sint-Baafs-Vijve

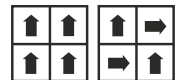
DOP: 1010#BIOACL

Textile Floor Covering EN1307
Notified body 0493

www.baltamediabank.com

49D7E8F0

GUT



MAINTENANCE: Spillage should be taken up promptly and surface stains removed by an appropriate method as soon as possible. In heavy traffic areas the carpet should be cleaned daily with a vacuum cleaner. Periodic maintenance should be carried out by professional cleaning staff using appropriate extraction systems. COLOUR MARCHING: As with all textile products there will be a variance in shade from batch to batch. Any samples supplied are as close a representation to the actual carpet as the production process will allow. An exact colour match between different dye batches cannot be guaranteed.

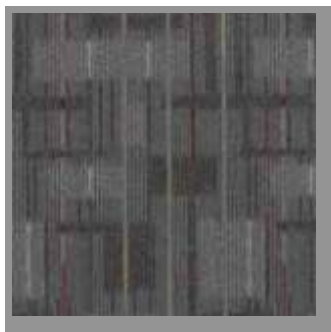


POWER ENERGY

COLLECTION



▲ 380



▲ 990



CRAFT

Manufacturing process Tufting 1/10" looppile	Méthode de fabrication Tuftée 1/10" poil bouclé	Herstellungsverfahren Getuftet 1/10" Schlingenpol	Fabricatiemethode Getuft 1/10" lussenpool
Pile composition 60% PA IMPREL®/ 40% PP	Composition du velours 60% PA IMPREL®/ 40% PP	Florzusammenstellung 60% PA IMPREL®/ 40% PP	Poolsamenstelling 60% PA IMPREL®/ 40% PP
Pile weight Ca. 660 g/m ²	Poids du velours Ca. 660 g/m ²	Polgewicht Ca. 660 g/m ²	Poolgewicht Ca. 660 g/m ²
Total weight Ca. 4.050 g/m ²	Poids total Ca. 4.050 g/m ²	Gesamtgewicht Ca. 4.050 g/m ²	Totaal gewicht Ca. 4.050 g/m ²
Pile height Ca. 3,0 mm	Hauteur du velours Ca. 3,0 mm	Floröhe Ca. 3,0 mm	Poolhoogte Ca. 3,0 mm
Total height Ca. 6,0 mm	Hauteur totale Ca. 6,0 mm	Gesamthöhe Ca. 6,0 mm	Totale hoogte Ca. 6,0 mm
Tuft density Ca. 215.000/m ²	Nombre de points Ca. 215.000/m ²	Noppenzahl Ca. 215.000/m ²	Aantal noppen Ca. 215.000/m ²
Size 50 x 50 cm	Dimensions 50 x 50 cm	Abmessung 50 x 50 cm	Afmetingen 50 x 50 cm
Packaging 5 m ²	Emballage 5 m ²	Verpackung 5 m ²	Verpakking 5 m ²
Fire class C _{fl} -s1 (EN 13501-1)	Classement feu C _{fl} -s1 (EN 13501-1)	Brandverhaltensklasse C _{fl} -s1 (EN 13501-1)	Brandklasse C _{fl} -s1 (EN 13501-1)
Fastness to light 5-6	Solidité à la lumière 5-6	Lichtechtheit 5-6	Lichtechtheid 5-6
Water fastness 4-5	Solidité à l'eau 4-5	Wasserechtheit 4-5	Waterechtheid 4-5

EN14041
CE
16
Balta Industries - Wakkensteenweg 2
BE - 8710 Sint-Baafs-Vijve
DOP: 1010#BG0ACL
Textile Floor Covering EN 1307
C_{fl}-s1 DL NA DS
PCP HCHO
www.baltamediabank.com

GUT
E0B76D8A
www.pse-ds.info



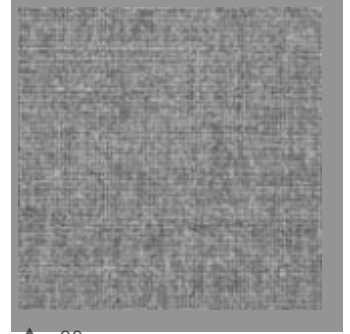
MAINTENANCE: Spillage should be taken up promptly and surface stains removed by an appropriate method as soon as possible. In heavy traffic areas the carpet should be cleaned daily with a vacuum cleaner. Periodic maintenance should be carried out by professional cleaning staff using appropriate extraction systems.
COLOUR MARCHING: As with all textile products there will be a variance in shade from batch to batch. Any samples supplied are as close a representation to the actual carpet as the production process will allow. An exact colour match between different dye batches cannot be guaranteed.



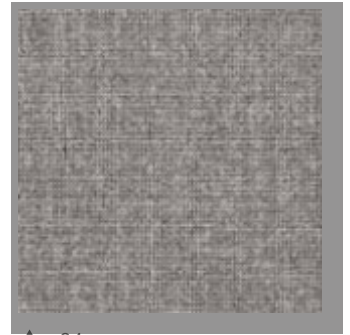
CRAFT



▲ 77



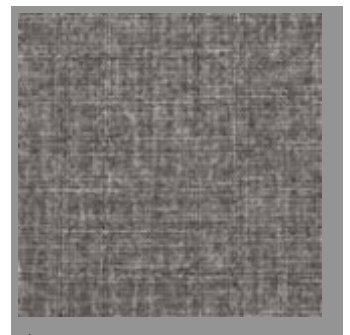
▲ 90



▲ 34



▲ 93



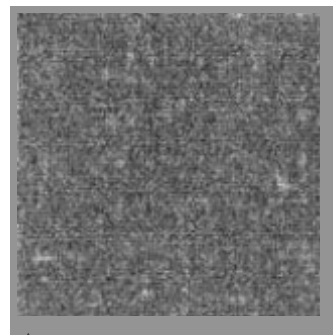
▲ 44



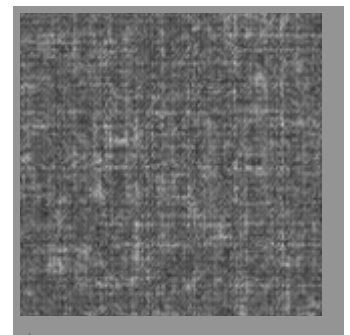
▲ 53



▲ 64



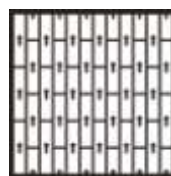
▲ 98



▲ 97



Manufacturing process Tufting 5/64" cutpile	Méthode de fabrication Tuftée 5/64" velours coupé	Herstellungsverfahren Getuftet 5/64" Schnittpol	Fabricatiemethode Getuft 5/64" gesneden pool
Pile composition 100% PA Imprel® Finesse	Composition du velours 100% PA Imprel® Finesse	Florzusammenstellung 100% PA Imprel® Finesse	Poolsamenstelling 100% PA Imprel® Finesse
Pile weight Ca. 800 g/m ²	Poids du velours Ca. 800 g/m ²	Polgewicht Ca. 800 g/m ²	Poolgewicht Ca. 800 g/m ²
Total weight Ca. 4.200 g/m ²	Poids total Ca. 4.200 g/m ²	Gesamtgewicht Ca. 4.200 g/m ²	Totaal gewicht Ca. 4.200 g/m ²
Pile height Ca. 3,5 mm	Hauteur du velours Ca. 3,5 mm	Floröhe Ca. 3,5 mm	Poolhoogte Ca. 3,5 mm
Total height Ca. 6,5 mm	Hauteur totale Ca. 6,5 mm	Gesamthöhe Ca. 6,5 mm	Totale hoogte Ca. 6,5 mm
Tuft density Ca. 249.000/m ²	Nombre de points Ca. 249.000/m ²	Noppenzahl Ca. 249.000/m ²	Aantal noppen Ca. 249.000/m ²
Size 25 x 100 cm	Dimensions 25 x 100 cm	Abmessung 25 x 100 cm	Afmetingen 25 x 100 cm
Packaging 5 m ²	Emballage 5 m ²	Verpackung 5 m ²	Verpakking 5 m ²
Fire class C _{fl} -s1 (EN 13501-1)	Classement feu C _{fl} -s1 (EN 13501-1)	Brandverhaltensklasse C _{fl} -s1 (EN 13501-1)	Brandklasse C _{fl} -s1 (EN 13501-1)
Fastness to light 5-6	Solidité à la lumière 5-6	Lichtechtheit 5-6	Lichtechtheid 5-6
Water fastness 4-5	Solidité à l'eau 4-5	Wasserechtheit 4-5	Waterechtheid 4-5



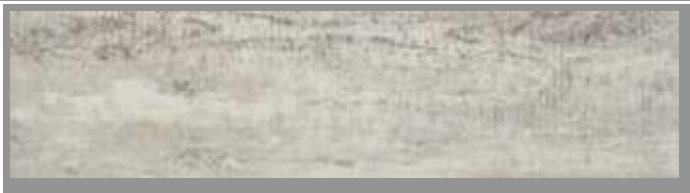
balta
carpet tiles

MAINTENANCE: Spillage should be taken up promptly and surface stains removed by an appropriate method as soon as possible. In heavy traffic areas the carpet should be cleaned daily with a vacuum cleaner. Periodic maintenance should be carried out by professional cleaning staff using appropriate extraction systems. COLOUR MARCHING: As with all textile products there will be a variance in shade from batch to batch. Any samples supplied are as close a representation to the actual carpet as the production process will allow. An exact colour match between different dye batches cannot be guaranteed.

Balta Carpet Tiles • Zevensterrestraat 21 • B-9240 Zele • Tel. +32 (0)52 80 80 80 • www.baltagroup.com



FOREST



▲ 33



▲ 39



▲ 90



▲ 93



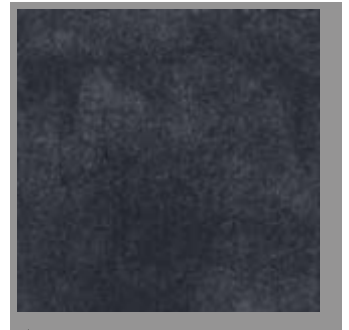
GRAPHITE



▲ 34



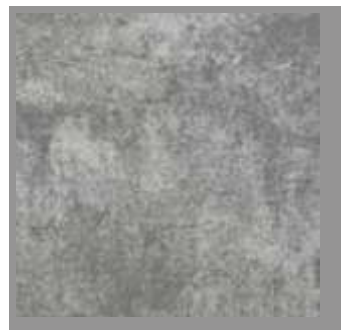
▲ 43



▲ 79



▲ 97



▲ 93



GRAPHITE

Manufacturing process Tufting 1/10" cutpile	Méthode de fabrication Tuftée 1/10" velours coupé	Herstellungsverfahren Getuftet 1/10" Schnittpol	Fabricatiemethode Getuft 1/10" gesneden pool
Pile composition 100% PA Imprel®	Composition du velours 100% PA Imprel®	Florzusammenstellung 100% PA Imprel®	Poolsamenstelling 100% PA Imprel®
Pile weight Ca. 730 g/m ²	Poids du velours Ca. 730 g/m ²	Polgewicht Ca. 730 g/m ²	Poolgewicht Ca. 730 g/m ²
Total weight Ca. 4.200 g/m ²	Poids total Ca. 4.200 g/m ²	Gesamtgewicht Ca. 4.200 g/m ²	Totaal gewicht Ca. 4.200 g/m ²
Pile height Ca. 4,4 mm	Hauteur du velours Ca. 4,4 mm	Floröhe Ca. 4,4 mm	Poolhoogte Ca. 4,4 mm
Total height Ca. 7,2 mm	Hauteur totale Ca. 7,2 mm	Gesamthöhe Ca. 7,2 mm	Totale hoogte Ca. 7,2 mm
Tuft density Ca. 156.000/m ²	Nombre de points Ca. 156.000/m ²	Noppenzahl Ca. 156.000/m ²	Aantal noppen Ca. 156.000/m ²
Size 50 x 50 cm	Dimensions 50 x 50 cm	Abmessung 50 x 50 cm	Afmetingen 50 x 50 cm
Packaging 5 m ²	Emballage 5 m ²	Verpackung 5 m ²	Verpakking 5 m ²
Fire class C _{fl} -s1 (EN 13501-1)	Classement feu C _{fl} -s1 (EN 13501-1)	Brandverhaltensklasse C _{fl} -s1 (EN 13501-1)	Brandklasse C _{fl} -s1 (EN 13501-1)
Fastness to light 5	Solidité à la lumière 5	Lichtechtheit 5	Lichtechtheid 5
Water fastness 4	Solidité à l'eau 4	Wasserechtheit 4	Waterechtheid 4



MAINTENANCE: Spillage should be taken up promptly and surface stains removed by an appropriate method as soon as possible. In heavy traffic areas the carpet should be cleaned daily with a vacuum cleaner. Periodic maintenance should be carried out by professional cleaning staff using appropriate extraction systems.
COLOUR MARCHING: As with all textile products there will be a variance in shade from batch to batch. Any samples supplied are as close a representation to the actual carpet as the production process will allow. An exact colour match between different dye batches cannot be guaranteed.

PRIMA

Manufacturing process Needle felt	Méthode de fabrication Aiguilleté	Herstellungsverfahren Nadelvlies	Fabricagemethode Naaldvilt
Pile composition 100% PP	Composition du velours 100% PP	Florzusammenstellung 100% PP	Poolzusammenstellung 100% PP
Total weight Ca. 3.250 g/m ²	Poids totale Ca. 3.250 g/m ²	Gesamtgewicht Ca. 3.250 g/m ²	Totaal gewicht Ca. 3.250 g/m ²
Pile weight Ca. 900 g/m ²	Poids du velours Ca. 900 g/m ²	Polgewicht Ca. 900 g/m ²	Poolgewicht Ca. 900 g/m ²
Total height Ca. 7 mm	Hauteur totale Ca. 7 mm	Gesamthöhe Ca. 7 mm	Totale hoogte Ca. 7 mm
Pile height Ca. 5,0 mm	Hauteur du velours Ca. 5,0 mm	Florhöhe Ca. 5,0 mm	Poolhoogte Ca. 5,0 mm
Size 50 x 50 cm	Dimensions 50 x 50 cm	Abmessung 50 x 50 cm	Afmetingen 50 x 50 cm
Packaging 5 m ²	Emballage 5 m ²	Verpackung 5 m ²	Verpakking 5 m ²
Antistatique < 2 kV	Antistatique < 2 kV	Antistatisch < 2 kV	Antistatisch < 2 kV
Fire class B _f -s1 (EN 13501-1)	Classement feu B _f -s1 (EN 13501-1)	Brandverhaltensklasse B _f -s1 (EN 13501-1)	Brandklasse B _f -s1 (EN 13501-1)
Sound insulation 25 dB	Isolation aux bruits d'impact 25 dB	Trittschalldämmung 25 dB	Geluidsisolatie 25 dB
Fastness to light 5-6	Solidité à la lumière 5-6	Lichtechtheit 5-6	Lichtechtheid 5-6
Water fastness 3-4	Solidité à l'eau 3-4	Wasserechtheit 3-4	Waterrechtheid 3-4



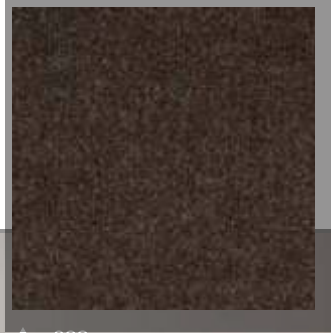
EAC



balta
carpet tiles

MAINTENANCE: Spillage should be taken up promptly and surface stains removed by an appropriate method as soon as possible. In heavy traffic areas the carpet should be cleaned daily with a vacuum cleaner. Periodic maintenance should be carried out by professional cleaning staff using appropriate extraction systems.
COLOUR MARCHING: As with all textile products there will be a variance in shade from batch to batch. Any samples supplied are as close a representation to the actual carpet as the production process will allow. An exact colour match between different dye batches cannot be guaranteed.

PRIMA



▲ 822



▲ 106



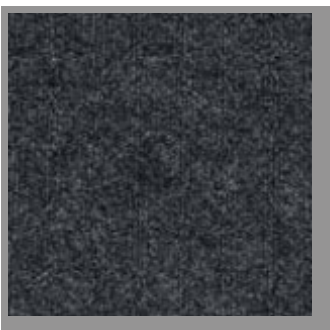
▲ 155



▲ 280



▲ 316



▲ 965



▲ 901



▲ 504



▲ 541

REX

Manufacturing process Needle felt	Méthode de fabrication Aiguilleté	Herstellungsverfahren Nadelvlies	Fabricagemethode Naaldvilt
Pile composition 100% PP	Composition du velours 100% PP	Florzusammenstellung 100% PP	Poolsamenstelling 100% PP
Total weight Ca. 2.850 g/m ²	Poids totale Ca. 2.850 g/m ²	Gesamtgewicht Ca. 2.850 g/m ²	Totaal gewicht Ca. 2.850 g/m ²
Pile weight Ca. 650 g/m ²	Poids du velours Ca. 650 g/m ²	Polgewicht Ca. 650 g/m ²	Poolgewicht Ca. 650 g/m ²
Total height Ca. 6,0 mm	Hauteur totale Ca. 6,0 mm	Gesamthöhe Ca. 6,0 mm	Totale hoogte Ca. 6,0 mm
Pile height Ca. 4,0 mm	Hauteur du velours Ca. 4,0 mm	Floröhe Ca. 4,0 mm	Poolhoogte Ca. 4,0 mm
Size 50 x 50 cm	Dimensions 50 x 50 cm	Abmessung 50 x 50 cm	Afmetingen 50 x 50 cm
Packaging 5 m ²	Emballage 5 m ²	Verpackung 5 m ²	Verpakking 5 m ²
Antistatique < 2 kV	Antistatique < 2 kV	Antistatisch < 2 kV	Antistatisch < 2 kV
Fire class B _f -s1 (EN 13501-1)	Classement feu B _f -s1 (EN 13501-1)	Brandverhaltensklasse B _f -s1 (EN 13501-1)	Brandklasse B _f -s1 (EN 13501-1)
Sound insulation 24 dB	Isolation aux bruits d'impact 24 dB	Trittschalldämmung 24 dB	Geluidsisolatie 24 dB
Fastness to light 5-6	Solidité à la lumière 5-6	Lichtechtheit 5-6	Lichtechtheid 5-6
Water fastness 3-4	Solidité à l'eau 3-4	Wasserechtheit 3-4	Waterrechtheid 3-4



MAINTENANCE: Spillage should be taken up promptly and surface stains removed by an appropriate method as soon as possible. In heavy traffic areas the carpet should be cleaned daily with a vacuum cleaner. Periodic maintenance should be carried out by professional cleaning staff using appropriate extraction systems. COLOUR MARCHING: As with all textile products there will be a variance in shade from batch to batch. Any samples supplied are as close a representation to the actual carpet as the production process will allow. An exact colour match between different dye batches cannot be guaranteed.



▲ 106



▲ 822



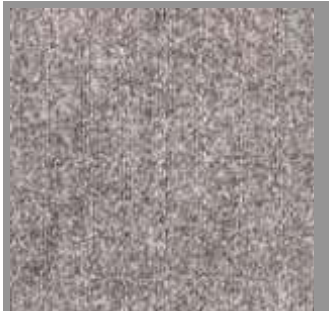
▲ 316



▲ 965



▲ 901

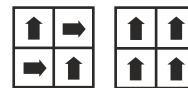


▲ 900

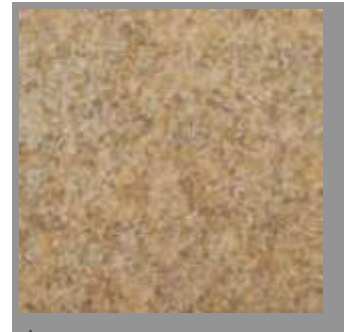


▲ 541

Manufacturing process Needle felt	Méthode de fabrication Aiguilleté	Herstellungsverfahren Nadelvlies	Fabricagemethode Naaldvilt
Pile composition 100% PP	Composition du velours 100% PP	Florzusammensetzung 100% PP	Poolzusammensetzung 100% PP
Total weight Ca. 2.850 g/m ²	Poids totale Ca. 2.850 g/m ²	Gesamtgewicht Ca. 2.850 g/m ²	Totaal gewicht Ca. 2.850 g/m ²
Pile weight Ca. 650 g/m ²	Poids du velours Ca. 650 g/m ²	Florgewicht Ca. 650 g/m ²	Poolgewicht Ca. 650 g/m ²
Total height Ca. 6 mm	Hauteur totale Ca. 6 mm	Gesamthöhe Ca. 6 mm	Totale hoogte Ca. 6 mm
Pile height Ca. 4,5 mm	Hauteur du velours Ca. 4,5 mm	Florhöhe Ca. 4,5 mm	Poolhoogte Ca. 4,5 mm
Size 50 x 50 cm	Dimensions 50 x 50 cm	Abmessung 50 x 50 cm	Afmetingen 50 x 50 cm
Packaging 5 m ²	Emballage 5 m ²	Verpackung 5 m ²	Verpakking 5 m ²
Antistatique < 2 kV	Antistatique < 2 kV	Antistatisch < 2 kV	Antistatisch < 2 kV
Fire class B _{fl} -s1 (EN 13501-1)	Classement feu B _{fl} -s1 (EN 13501-1)	Brandverhaltensklasse B _{fl} -s1 (EN 13501-1)	Brandklasse B _{fl} -s1 (EN 13501-1)
Sound insulation 24 dB	Isolation aux bruits d'impact 24 dB	Trittschalldämmung 24 dB	Geluidsisolatie 24 dB
Fastness to light 5-6	Solidité à la lumière 5-6	Lichtechnheit 5-6	Lichtechnheit 5-6
Water fastness 3-4	Solidité à l'eau 3-4	Wasserechtheit 3-4	Waterrechtheid 3-4



MAINTENANCE: Spillage should be taken up promptly and surface stains removed by an appropriate method as soon as possible. In heavy traffic areas the carpet should be cleaned daily with a vacuum cleaner. Periodic maintenance should be carried out by professional cleaning staff using appropriate extraction systems. COLOUR MATCHING: As with all textile products there will be a variance in shade from batch to batch. Any samples supplied are as close a representation to the actual carpet as the production process will allow. An exact colour match between different dye batches cannot be guaranteed.



▲ 106



▲ 822



▲ 316



▲ 965



▲ 901



▲ 900



▲ 541



IMPACT

SPECIALS

IMPRESSION

Manufacturing process Tufting 1/10" looppile	Méthode de fabrication Tuftée 1/10" poil bouclé	Herstellungsverfahren Getuftet 1/10" Schlingenpol	Fabricatiemethode Getuft 1/10" lussenpool
Pile composition 100% PP Stainsafe®	Composition du velours 100% PP Stainsafe®	Florzusammenstellung 100% PP Stainsafe®	Pool Samenstellung 100% PP Stainsafe®
Pile weight Ca. 550 g/m ²	Poids du velours Ca. 550 g/m ²	Polgewicht Ca. 550 g/m ²	Poolgewicht Ca. 550 g/m ²
Total weight Ca. 4.300 g/m ²	Poids totale Ca. 4.300 g/m ²	Gesamtgewicht Ca. 4.300 g/m ²	Totaal gewicht Ca. 4.300 g/m ²
Pile height Ca. 4 mm	Hauteur du velours Ca. 4 mm	Florhöhe Ca. 4 mm	Poolhoogte Ca. 4 mm
Tuft density Ca. 185.650/m ²	Nombre de touffes Ca. 185.650/m ²	Noppenzahl Ca. 185.650/m ²	Aantal noppen Ca. 185.650/m ²
Total height Ca. 7 mm	Hauteur totale Ca. 7 mm	Gesamthöhe Ca. 7 mm	Totale hoogte Ca. 7 mm
Size 50 x 50 cm	Dimensions 50 x 50 cm	Abmessung 50 x 50 cm	Afmetingen 50 x 50 cm
Packaging 5 m ²	Emballage 5 m ²	Verpackung 5 m ²	Verpakking 5 m ²
Antistatique < 2 kV	Antistatique < 2 kV	Antistatisch < 2 kV	Antistatisch < 2 kV
Fire class C _{fl} -s1 (EN 13501-1) Centexbel 0493-CPR-0130	Classement feu C _{fl} -s1 (EN 13501-1) Centexbel 0493-CPR-0130	Brandverhaltensklasse C _{fl} -s1 (EN 13501-1) Centexbel 0493-CPR-0130	Brandklasse C _{fl} -s1 (EN 13501-1) Centexbel 0493-CPR-0130
Sound insulation 22 dB	Isolation aux bruits d'impact 22 dB	Trittschalldämmung 22 dB	Geluidsisolatie 22 dB
Fastness to light 5-6	Solidité à la lumière 5-6	Lichtechtheit 5-6	Lichtechtheid 5-6
Water fastness 4-5	Solidité à l'eau 4-5	Wasserechtheit 4-5	Waterrechtheid 4-5

EN14041

16

Balta Industries - Wakkensteenweg 2
BE - 8710 Sint-Baafs-Vijve

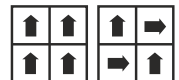
DOP: 1010#BIOACL

Textile Floor Covering EN1307
Notified body 0493

www.baltamediaibank.com



IMPRESSION 380 880
Min. 2.500m² ✓ ✓



MAINTENANCE: Spillage should be taken up promptly and surface stains removed by an appropriate method as soon as possible. In heavy traffic areas the carpet should be cleaned daily with a vacuum cleaner. Periodic maintenance should be carried out by professional cleaning staff using appropriate extraction systems.
COLOUR MARCHING: As with all textile products there will be a variance in shade from batch to batch. Any samples supplied are as close a representation to the actual carpet as the production process will allow. An exact colour match between different dye batches cannot be guaranteed.



IMPACT
SPECIALS

IMPRESSION

L C T ® **FIRST**
Luxury Carpet Tiles





POWER *specials* ENERGY

COLLECTION



Manufacturing process Tufting 1/10" looppile	Méthode de fabrication Tuftée 1/10" poil bouclé	Herstellungsverfahren Getuftet 1/10" Schlingenpol	Fabricatiemethode Getuft 1/10" lussenpool
Pile content 100% PP Stainsafe®	Composition du velours 100% PP Stainsafe®	Polmaterial 100% PP Fleckweg®	Pool Samenstelling 100% PP Stainsafe®
Pile weight Ca. 550 g/m ²	Poids du velours Ca. 550 g/m ²	Polgewicht Ca. 550 g/m ²	Poolgewicht Ca. 550 g/m ²
Total weight Ca. 4.300 g/m ²	Poids totale Ca. 4.300 g/m ²	Gesamtgewicht Ca. 4.300 g/m ²	Totaal gewicht Ca. 4.300 g/m ²
Pile height Ca. 4 mm	Hauteur du velours Ca. 4 mm	Florhöhe Ca. 4 mm	Poolhoogte Ca. 4 mm
Total height Ca. 7 mm	Hauteur totale Ca. 7 mm	Gesamthöhe Ca. 7 mm	Totale hoogte Ca. 7 mm
Tuft density Ca. 212.760/m ²	Nombre de touffes Ca. 212.760/m ²	Noppenzahl Ca. 212.760/m ²	Aantal noppen Ca. 212.760/m ²
Size 50 x 50 cm	Dimensions 50 x 50 cm	Abmessung 50 x 50 cm	Afmetingen 50 x 50 cm
Packaging 5 m ²	Emballage 5 m ²	Verpackung 5 m ²	Verpakking 5 m ²
Antistatique < 2 kV	Antistatique < 2 kV	Antistatisch < 2 kV	Antistatisch < 2 kV
Fire class C _{fl} -s1 (EN 13501-1) Centexbel 0493-CPR-0130	Classement feu C _{fl} -s1 (EN 13501-1) Centexbel 0493-CPR-0130	Brandverhaltensklasse C _{fl} -s1 (EN 13501-1) Centexbel 0493-CPR-0130	Brandklasse C _{fl} -s1 (EN 13501-1) Centexbel 0493-CPR-0130
Sound insulation 22 dB	Isolation aux bruits d'impact 22 dB	Trittschalldämmung 22 dB	Geluidsisolatie 22 dB
Fastness to light 5-6	Solidité à la lumière 5-6	Lichtechtheit 5-6	Lichtechtheid 5-6
Water fastness 4-5	Solidité à l'eau 4-5	Wasserechtheit 4-5	Waterechtheid 4-5

ENERGY	660	950
Special : Min. 10.000m ²	✓	✓

EN 14041

16

Balta Industries - Wakkensteenweg 2
BE - 8710 Sint-Baafs-Vijve

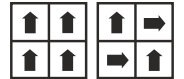
DOP: 1010#BIOACL

Textile Floor Covering EN1307
Notified body 0493

www.baltamediabank.com

49D7E8F0

www.gut.com



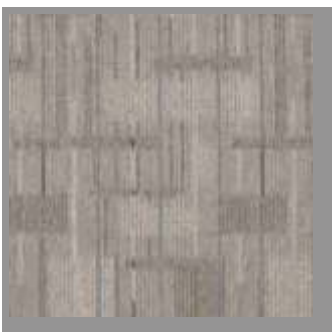
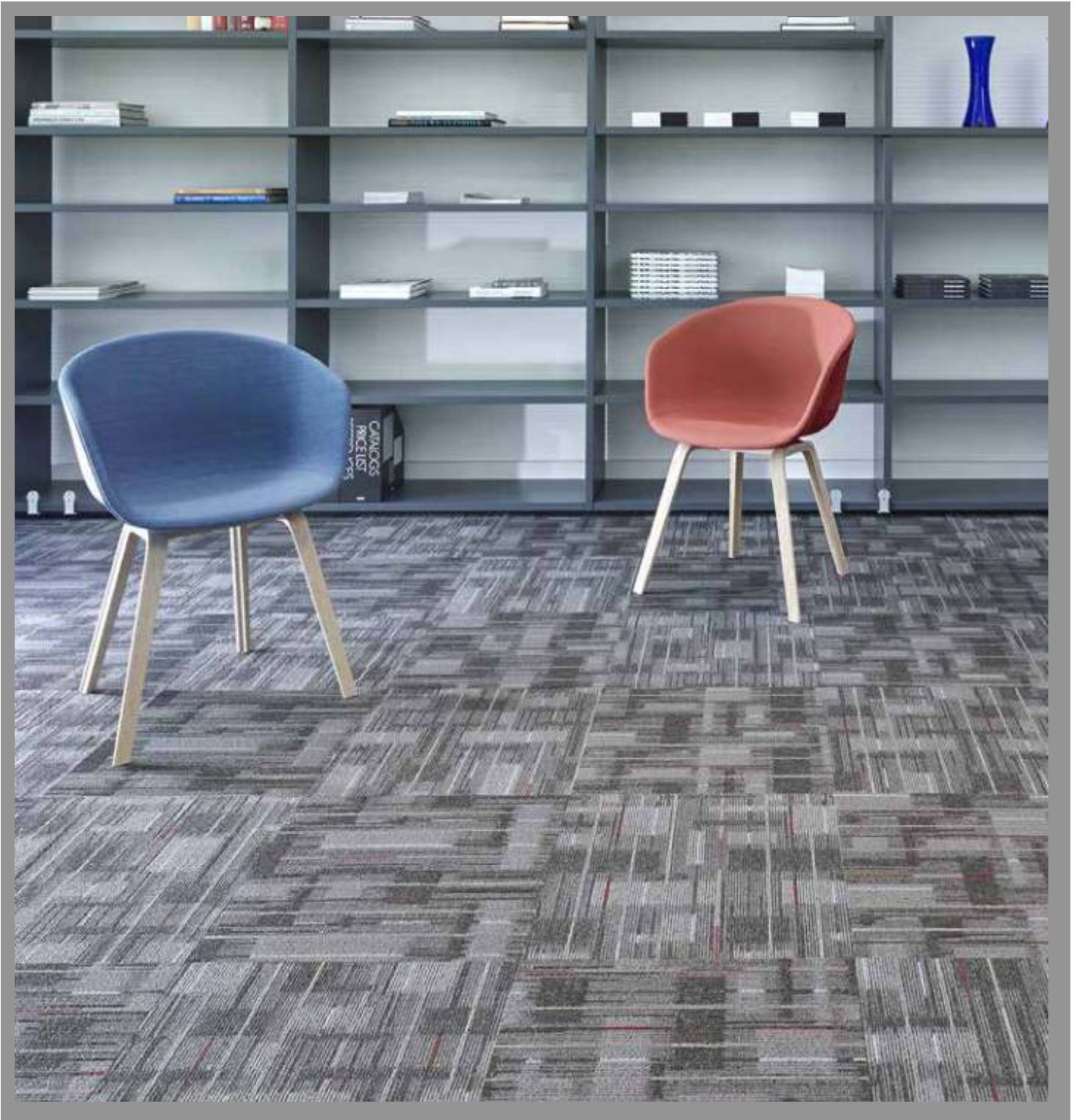
MAINTENANCE: Spillage should be taken up promptly and surface stains removed by an appropriate method as soon as possible. In heavy traffic areas the carpet should be cleaned daily with a vacuum cleaner. Periodic maintenance should be carried out by professional cleaning staff using appropriate extraction systems. COLOUR MARCHING: As with all textile products there will be a variance in shade from batch to batch. Any samples supplied are as close a representation to the actual carpet as the production process will allow. An exact colour match between different dye batches cannot be guaranteed.



POWER *specials* ENERGY

COLLECTION

L C T[®] FIRST
Luxury Carpet Tiles



▲ 660



▲ 950

Luxury Carpet Tiles

www.elstar.info.pl

