



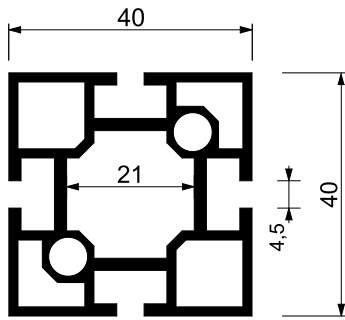
# SYSTEM 80



### profil 40/40

square extrusion 40/40

01.006



Waga: 1,29 kg/mb  
 Długość: 6010 mm  
 Materiał: EN-AW 6060,  
 aluminium satynowane,  
 anodowane  
 Kolor: naturalny  
 lub wg RAL

**Europejski wzór przemysłowy**

Weight: 1,29 kg/mb  
 Length: 6010 mm  
 Material: EN-AW 6060,  
 aluminium satin,  
 anodised  
 Color: natural  
 or RAL palette

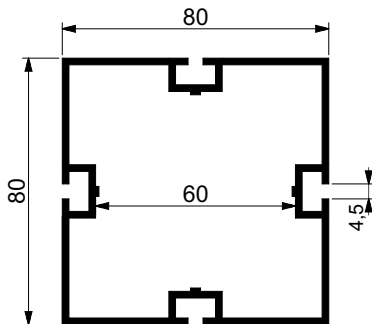
**European industrial design**



### profil 80/80

square extrusion 80/80

02.001



Waga: 2,2 kg/mb  
 Długość: L- 6010 mm  
 Materiał: EN-AW 6060,  
 aluminium satynowane,  
 anodowane  
 Kolor: naturalny  
 lub wg RAL

**Wzór przemysłowy**

Weight: 2,2 kg/mb  
 Length: L- 6010 mm  
 Material: EN-AW 6060,  
 aluminium satin,  
 anodised  
 Color: natural  
 or RAL palette

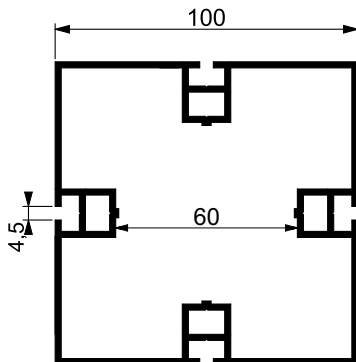
**Industrial design**



### profil 100/100

square extrusion 100/100

02.002



Waga: 3,36 kg/mb  
 Długość: L- 6010 mm  
 Materiał: EN-AW 6060,  
 aluminium satynowane,  
 anodowane  
 Kolor: naturalny  
 lub wg RAL

**Europejski wzór przemysłowy**

Weight: 3,36 kg/mb  
 Length: L- 6010 mm  
 Material: EN-AW 6060,  
 aluminium satin,  
 anodised  
 Color: natural  
 or RAL palette

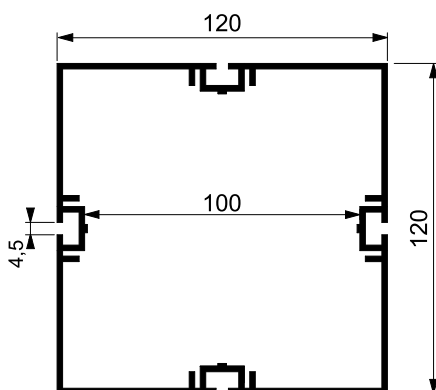
**European industrial design**



### profil 120/120

square extrusion 120/120

02.003



Waga: 3,32 kg/mb  
 Długość: 6010 mm  
 Materiał: EN-AW 6060,  
 aluminium satynowane,  
 anodowane  
 Kolor: naturalny  
 lub wg RAL

**Wzór przemysłowy**

Weight: 3,32 kg/mb  
 Length: 6010 mm  
 Material: EN-AW 6060,  
 aluminium satin,  
 anodised  
 Color: natural  
 or RAL palette

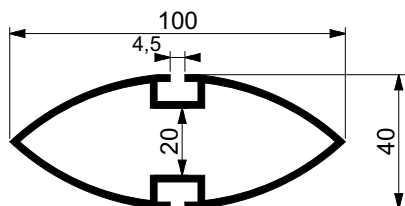
**Industrial design**



### profil eliptyczny 100/40

elliptical extrusion 100/40

02.004



Waga: 1,42 kg/mb  
 Długość: 5010 mm  
 Materiał: EN-AW 6060,  
 aluminium satynowane,  
 anodowane  
 Kolor: naturalny  
 lub wg RAL

**Wzór przemysłowy**

Weight: 1,42 kg/m  
 Length: 5010 mm  
 Material: EN-AW 6060,  
 aluminium satin,  
 anodised  
 Color: natural  
 or RAL palette

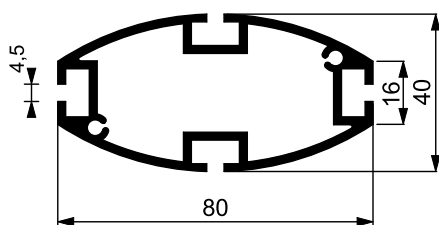
**Industrial design**



### profil eliptyczny 80/40

elliptical profile 80/40

02.005



Waga: 1,65 kg/mb  
 Długość: 5010 mm  
 Materiał: EN-AW 6060,  
 aluminium satynowane,  
 anodowane  
 Kolor: naturalny  
 lub wg RAL

**Wzór przemysłowy**

Weight: 1,65 kg/mb  
 Length: 5010 mm  
 Material: EN-AW 6060,  
 aluminium satin,  
 anodised  
 Color: natural  
 or RAL palette

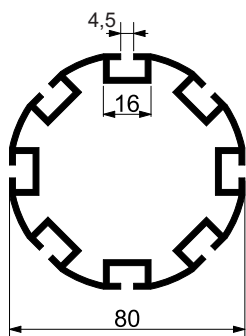
**Industrial design**



### profil Ø 80

round extrusion Ø 80

02.006



Waga: 2,37 kg/mb  
 Długość: 5010 mm  
 Materiał: EN-AW 6060,  
 aluminium satynowane,  
 anodowane  
 Kolor: naturalny  
 lub wg RAL

**Wzór przemysłowy**

Weight: 2,37 kg/m  
 Length: 5010 mm  
 Material: EN-AW 6060,  
 aluminium satin,  
 anodised  
 Color: natural  
 or RAL palette

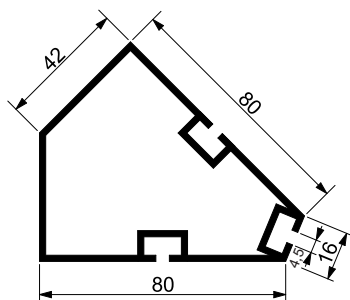
**Industrial design**



### profil narożnikowy 80/45°

connecting extrusion 80/45°

02.007



Waga: 1,73 kg/mb  
 Długość: 5010 mm  
 Materiał: EN-AW 6060,  
 aluminium satynowane,  
 anodowane  
 Kolor: naturalny  
 lub wg RAL

**Wzór przemysłowy**

Weight: 1,73 kg/m  
 Length: 5010 mm  
 Material: EN-AW 6060,  
 aluminium satin,  
 anodised  
 Color: natural  
 or RAL palette

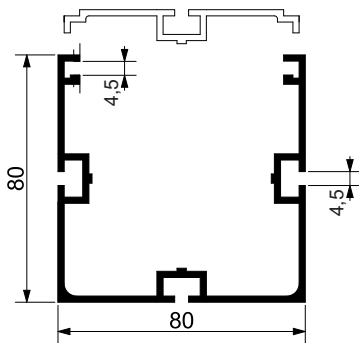
**Industrial design**



### profil otwarty 80/80

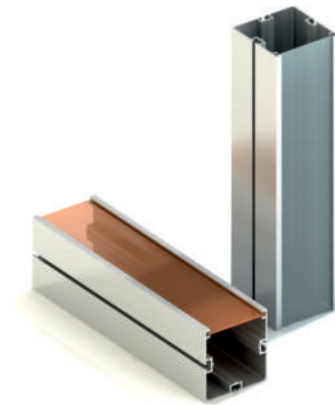
open square extrusion 80/80

02.008



Waga: 1,82 kg/mb  
Długość: 5010 mm  
Materiał: EN-AW 5010,  
aluminium satynowane,  
anodowane  
Kolor: naturalny  
lub wg RAL  
**wzór przemysłowy**

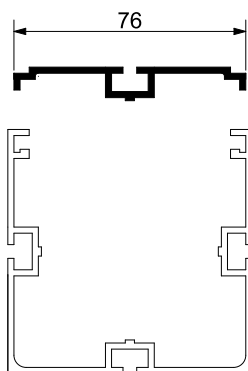
Weight: 1,82 kg/m  
Length: 5010 mm  
Material: EN-AW 5010,  
aluminium satin,  
anodised  
Color: natural  
or RAL palette  
**industrial design**



### uzupełnienie profilu otwartego

flange extrusion

02.009



Waga: 0,6 kg/mb  
Długość: 5010 mm  
Materiał: EN-AW 5010,  
aluminium satynowane,  
anodowane  
Kolor: naturalny  
lub wg RAL  
**wzór przemysłowy**

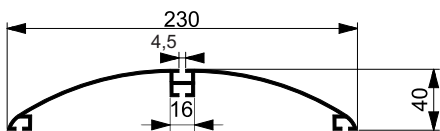
Weight: 0,6 kg/m  
Length: 5010 mm  
Material: EN-AW 5010,  
aluminium satin,  
anodised  
Color: natural  
or RAL palette  
**industrial design**



### profil reklamowy 40/230

oval extrusion „open”

02.010



Waga: 2,3 kg/mb  
Długość: 5010 mm  
Materiał: EN-AW 6060,  
aluminium satynowane,  
anodowane  
Kolor: naturalny  
lub wg RAL  
**wzór przemysłowy**

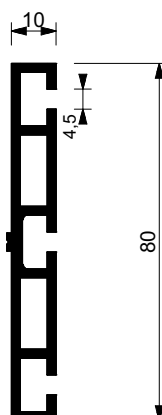
Weight: 2,3 kg/m  
Length: 5010 mm  
Material: EN-AW 6060,  
aluminium satin,  
anodised  
Color: natural or RAL  
**industrial design**



### profil 80/10

beam extrusion 80/10

02.011



Waga: 1,0 kg/mb  
Długość: 6010 mm  
Materiał: EN-AW 6060,  
aluminium satynowane,  
anodowane  
Kolor: naturalny  
lub wg RAL

Weight: 1,0 kg/m  
Length: 6010 mm  
Material: EN-AW 6060,  
aluminium satin,  
anodised  
Color: natural  
or RAL palette



An isometric line drawing of a mechanical assembly, possibly a door handle or lock mechanism, rendered in white lines on an orange background. The drawing shows a complex structure with various rectangular and cylindrical components. Two prominent circular elements are visible on the right side, which could be buttons or sensors. The overall design is functional and industrial.

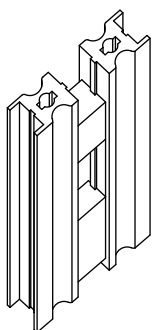
# AKCESORIA DO SYSTEMU 80

SYSTEM 80 ACCESSORIES



przedłużka do profilu 80/80  
extension for profile 80/80

02.101



Material: aluminium  
Waga: 0,372 kg

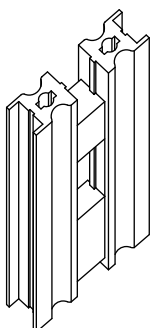
Material: aluminium  
Weight: 0,372 kg

**patent pending**



przedłużka do profilu Ø 80  
extension for profile Ø 80

02.102



Material: aluminium  
Waga: 0,372 kg

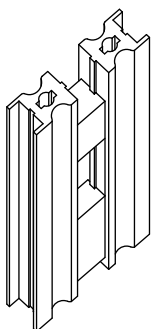
Material: aluminium  
Weight: 0,372 kg

**patent pending**



przedłużka do profilu 100/100  
extension for profile 100/100

02.103



Material: aluminium  
Waga: 0,372 kg

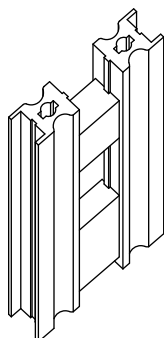
Material: aluminium  
Weight: 0,372 kg

**patent pending**



przedłużka do profilu 120/120  
extension for profile 120/120

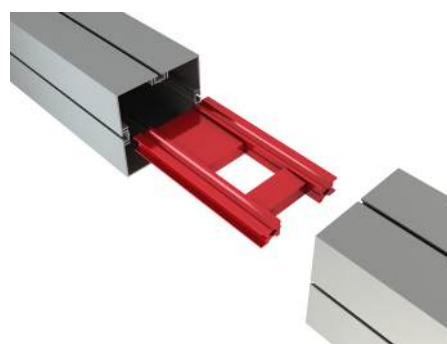
02.104



Material: aluminium

Material: aluminium

**patent pending**





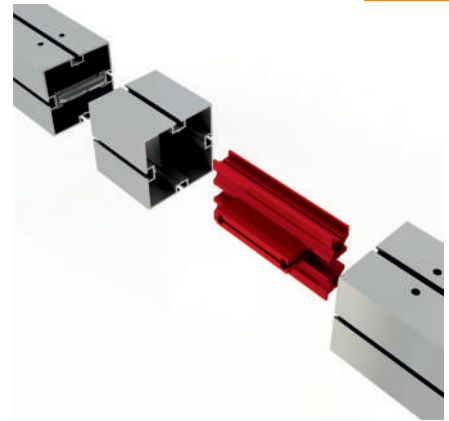
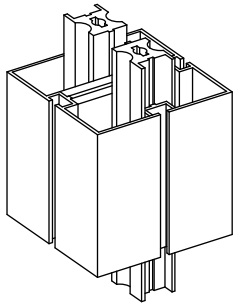
przedłużka łączyny 80x80  
beam extension 80x80

02.105

Material: aluminium  
Waga: 0,45 kg

Material: aluminium  
Weight: 0,45 kg

patent pending



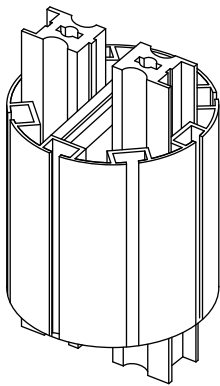
przedłużka łączyny Ø 80  
beam extension Ø 80

02.106

Material: aluminium

Material: aluminium

patent pending



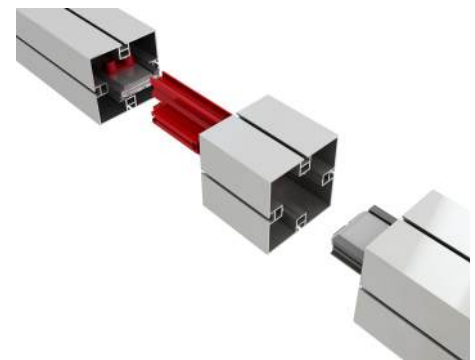
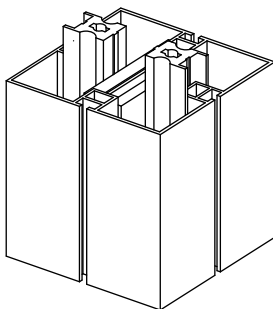
przedłużka łączyny 100x100  
beam extension 100x100

02.107

Material: aluminium

Material: aluminium

patent pending



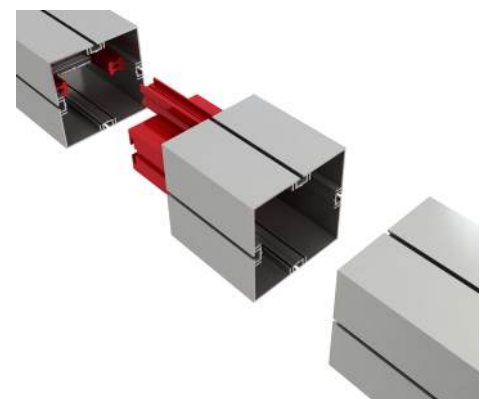
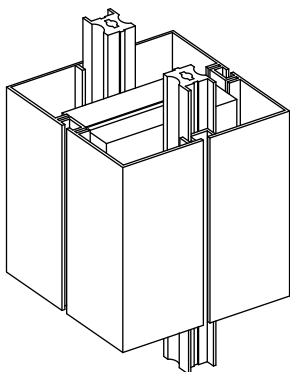
przedłużka łączyny 120x120  
beam extension 120x120

02.108

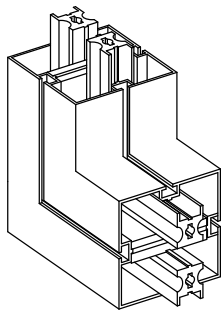
Material: aluminium

Material: aluminium

patent pending



**narożna przedłużka łączyny 80x80**  
 beam extension 80x80

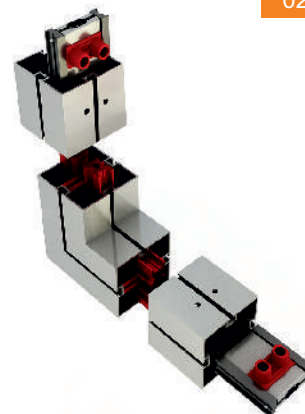


Material: aluminium  
 Waga: 0,372 kg

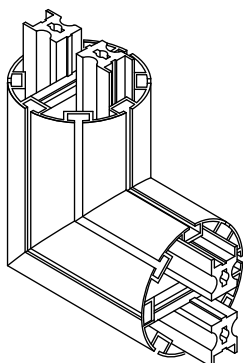
Material: aluminium  
 Weight: 0,372 kg

**patent pending**

02.109



**narożna przedłużka łączyny Ø 80**  
 beam extension Ø 80



Material: aluminium  
 Waga: 0,45 kg

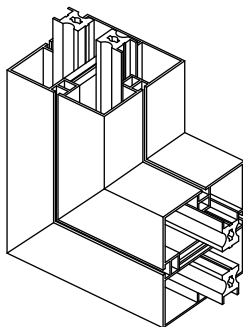
Material: aluminium  
 Weight: 0,45 kg

**patent pending**

02.110



**narożna przedłużka łączyny 100x100**  
 beam extension 100x100



Material: aluminium

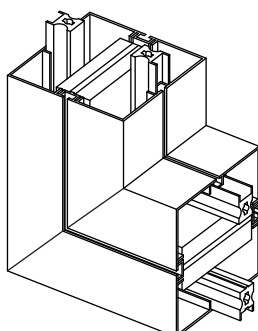
Material: aluminium

**patent pending**

02.111



**narożna przedłużka łączyny 120x120**  
 beam extension 120x120



Material: aluminium

Material: aluminium

**patent pending**

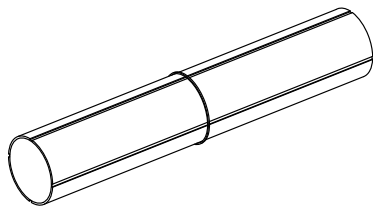
02.112



przedłużka okrągła  
do profilu 80x80  
extension for profile 80x80

Material: aluminium  
Waga: 0,372 kg

Material: aluminium  
Weight: 0,372 kg

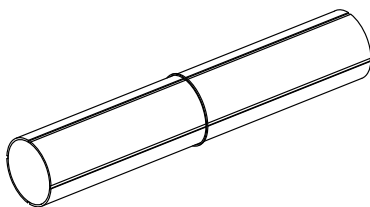


02.113

przedłużka okrągła  
do profilu Ø 80  
extension for profile Ø 80

Material: aluminium  
Waga: 0,45 kg

Material: aluminium  
Weight: 0,45 kg

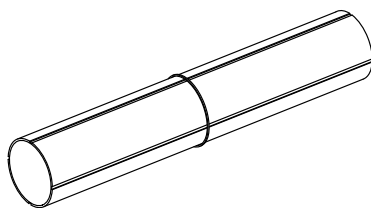


02.114

przedłużka okrągła  
do profilu 100x100  
extension for profile 100x100

Material: aluminium  
Waga: 0,45 kg

Material: aluminium  
Weight: 0,45 kg

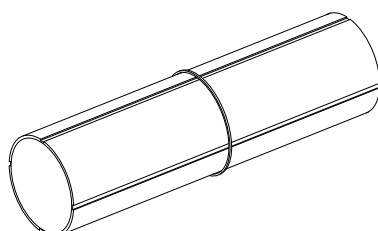


02.115

przedłużka okrągła  
do profilu 120x120  
extension for profile 120x120

Material: stal  
L - 300 mm

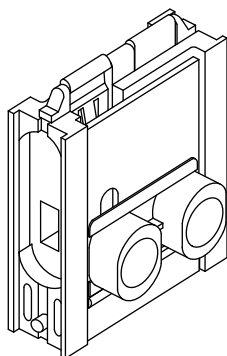
Material: steel  
L - 300 mm



02.116

**zamek E-max**  
tension lock E-max

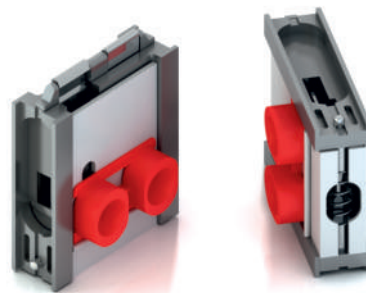
02.117



Material: ZnAl, aluminium, stal  
Zastosowanie: profil 80x80,  
Ø 80, 100x100, 120x120  
Waga: 0,25 kg

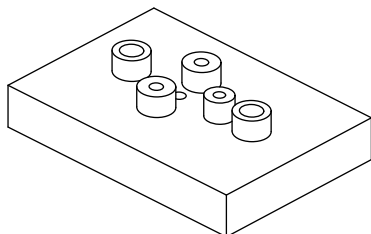
Material: ZnAl, aluminium, steel  
For profile: 80x80,  
Ø 80, 100x100, 120x120  
Weight: 0,25 kg

patent



**wiertnik uniwersalny**  
drilling aid

02.118



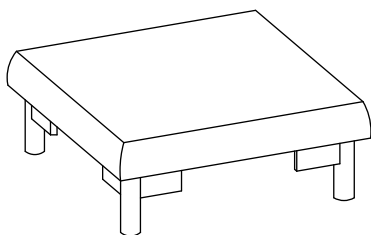
Material: stal  
Zastosowanie - wiercenie  
otworów pod montaż  
zamek E-max  
Waga: 1,7 kg

Material: steel  
Use: used for drilling  
holes in profiles  
Weight: 1,7 kg



**zaślepka do profilu 40/40**  
end cap 40/40

01.113



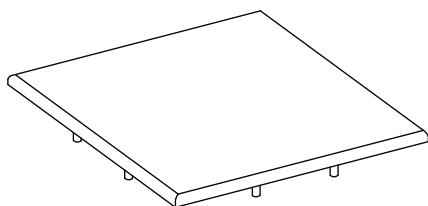
Material: tworzywo sztuczne  
Kolor: popiel  
Waga: 0,007 kg

Material: plastic  
Color: grey  
Weight: 0,007 kg



**zaślepka do profilu 80/80**  
end cap 80/80

02.119



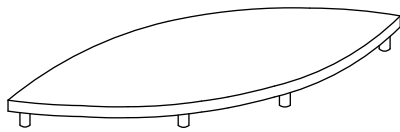
Material: tworzywo sztuczne  
Kolor: popiel  
Waga: 0,026 kg

Material: plastic  
Color: grey  
Weight: 0,026 kg



zaślepka do profilu  
eliptycznego 100x40  
end cap for elliptical profile

02.120



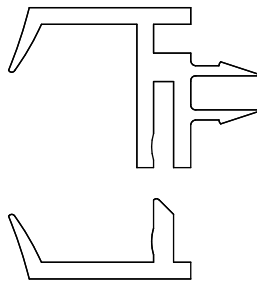
Materiał: tworzywo sztuczne  
Kolor: popiel  
Waga: 0,011 kg

Material: plastic  
Color: grey  
Weight: 0,011 kg



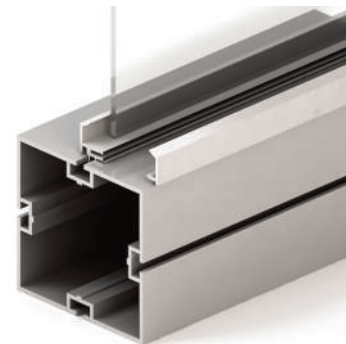
listwa zatraskowa  
do szyb, pleksi  
glass panel retainer

01.124



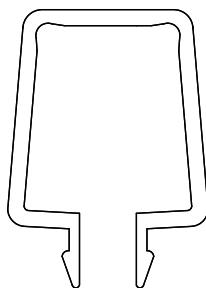
Materiał: tworzywo sztuczne  
Kolor: popiel  
Szyba 5-10 mm  
Waga: 0,035 kg  
L-2000 mm

Material: plastic  
Color: grey  
Glass 5-10 mm  
Weight: 0,035 kg  
L-2000 mm



listwa osłonowa  
przewodu  
wire way extrusion

01.125



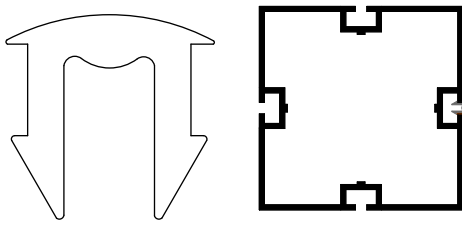
Materiał: tworzywo sztuczne  
Kolor: popiel  
Waga: 0,027 kg  
L-2000 mm

Material: plastic  
Color: grey  
Waga: 0,032 kg/mb  
L-2000 mm



listwa banerowa  
groove filler

01.126



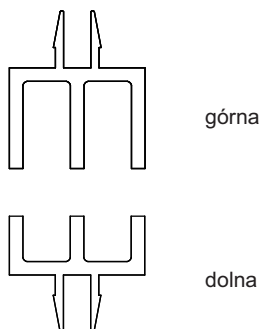
Materiał: tworzywo sztuczne  
Kolor: popiel  
Waga: 0,19 kg/L -2000

Material: plastic  
Color: white, grey, black  
Weight: 0,043 kg/L-2000



**listwa drzewi przesuwnych**  
upper and bottom track for sliding door

01.127 / 01.128



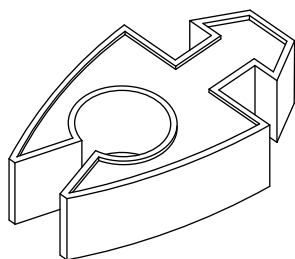
Materiał: tworzywo sztuczne  
Kolor: popiel  
Szyba max. 5 mm  
Waga: 0,027 kg  
Górna, dolna

Material: plastic  
Color: grey  
GLass max. 5 mm  
Weight: 0,027 kg  
L - 2000 mm



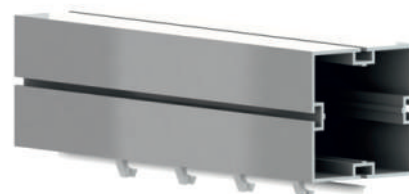
**chwytek przewodu**  
wire holder

01.129



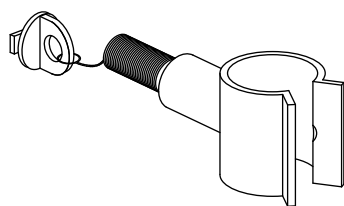
Materiał: tworzywo sztuczne  
Waga: 0,006 kg

Material: plastic  
Weight: 0,006 kg



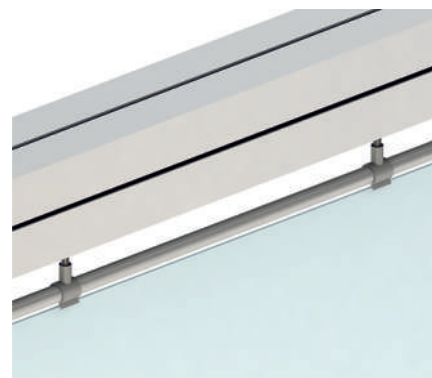
**Klips do baneru**  
wire holder

01.130



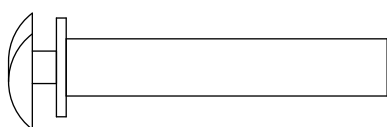
Materiał: tworzywo sztuczne  
Waga: 0,005 kg

Material: plastic  
Weight: 0,007 kg



**bolec podporowy Ø 8**  
short screw Ø 8

01.132



Materiał: stal ocynkowana  
Waga: 0,001 kg

Material: zink coated steel  
Weight: 0,001 kg

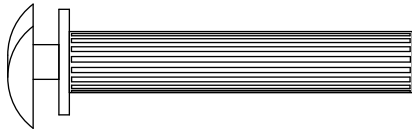


**boleć podporowy Ø 8**  
**radełkowany**  
 threaded short screw Ø 8

01.133

Material: stal ocynkowana  
 Waga: 0,011 kg

Material: zink coated steel  
 Weight: 0,001 kg

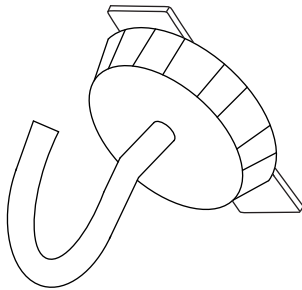


**haczyk**  
 hook

01.135

Material: stal  
 Waga: 0,015 kg

Material: ZnAl, zink coated steel  
 Weight: 0,015 kg

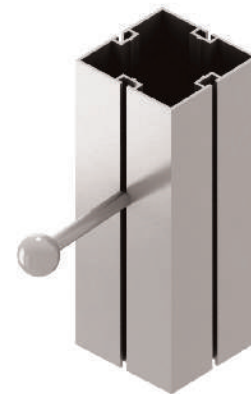
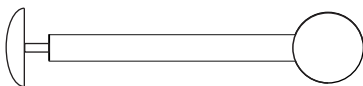


**wieszak**  
 hanger

01.136

Material: stal ocynkowana

Material: zink coated steel  
 Color: RAL palette



**wieszak systemowy**  
**podwójnie łamany**  
 hanger

01.137.1

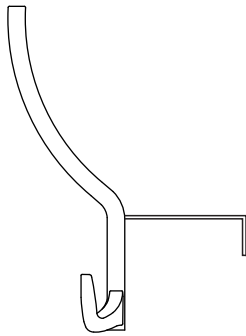
Material: aluminium  
 Waga: 1,2 kg  
 Kolor: naturalny  
 lub wg RAL

Material: aluminium  
 Weight: 1,2 kg  
 Color: natural or  
 RAL palette



**wieszak**  
hook

02.121



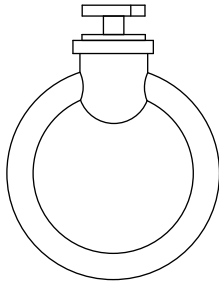
Material: ZnAl  
Waga: 0,087 kg  
Kolor: naturalny  
lub wg RAL

Material: ZnAl  
Weight: 0,087 kg  
Color: natural  
or RAL palette



**zawieszanie małe**  
ring hook

01.139



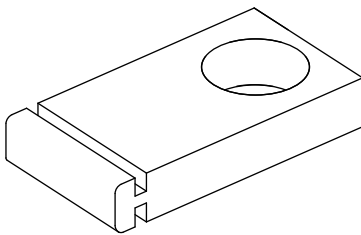
Material: stal  
Waga: 0,013 kg

Material: zink coated steel  
Weight: 0,014 kg



**zawieszanie**  
suspension

01.140



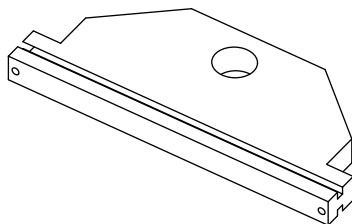
Material: aluminium  
Waga: 0,035kg

Material: aluminium  
Weight: 0,035kg



**zawieszanie z blokadą**  
suspension with block

01.141



Material: aluminium  
Waga: 0,103 kg

Material: aluminium  
Weight: 0,103 kg



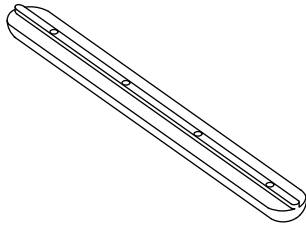


## łącznik słupka

connector

Material: ZnAl  
Waga: 0,024 kg

Material: ZnAl  
Weight: 0,024 kg



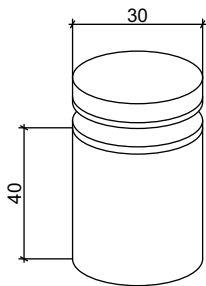
01.150

## dystans duży

sign holder

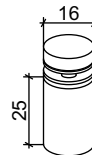
Material: aluminium polerowane  
Waga: 0,115 kg

Material: aluminium  
Weight: 0,115 kg



### dystans do szyb Ø16

sign holder  
01.152.1



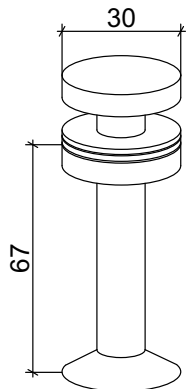
01.152.2

## dystans duży Ø30

sign holder

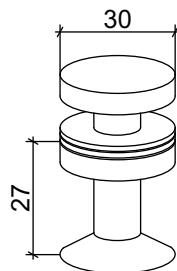
Material: stal ocynkowana,  
stal nierdzewna  
Waga: 0,135 kg

Material: zink coated steel,  
stainless steel  
Weight: 0,135 kg



### dystans mały

sign holder  
01.153.1



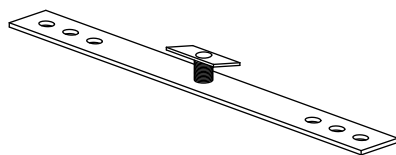
01.153.2

## blaszka do mocowania płyty

panel fastening blade

Material: stal ocynkowana  
L - 150  
Waga: 0,044 kg

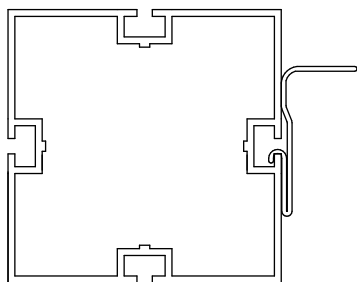
Material: zink coated steel  
L - 150  
Weight: 0,044 kg



01.145.2

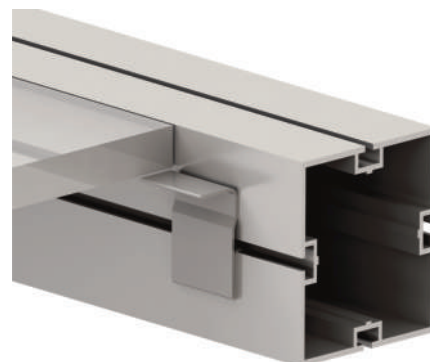
**zetka 18 mm**  
panel retainer 18 mm

02.122



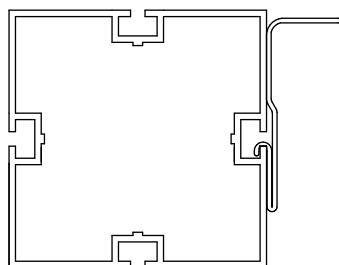
Materiał: stal ocynkowana  
Waga: 0,03 kg

Material: zink coated steel  
Weight: 0,03 kg



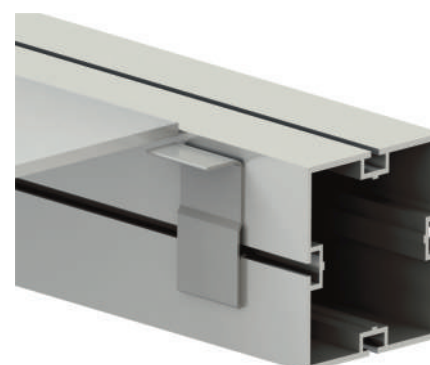
**zetka 5 mm**  
panel retainer 5 mm

02.123



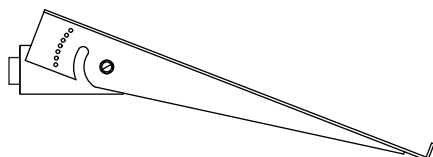
Materiał: stal ocynkowana  
Waga: 0,035 kg

Material: zink coated steel  
Weight: 0,035 kg



**podpora półki**  
regulowana lewa  
left shelf bracket

01.158



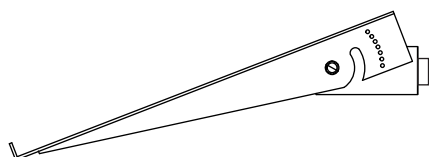
Materiał: aluminium  
Kolor: wg RAL  
Waga: 0,18 kg  
Długość: 200, 250, 300

Material: aluminium  
Color: RAL palette  
Weight: 0,18 kg  
Length: 200, 250, 300



**podpora półki**  
regulowana prawa  
left shelf bracket

01.159



Materiał: aluminium  
Kolor: wg RAL  
Waga: 0,18 kg  
Długość 200, 250, 300

Material: aluminium  
Color: RAL palette  
Weight: 0,18 kg  
Length: 200, 250, 300

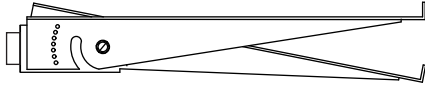


podpora półki  
regulowana podwójna  
double shelf bracket

01.160

Materiał: aluminium  
Kolor: wg RAL  
Waga: 0,27 kg  
Długość 200, 250, 300

Materiał: aluminium  
Color: RAL palette  
Weight: 0,27 kg  
Length: 200, 250, 300

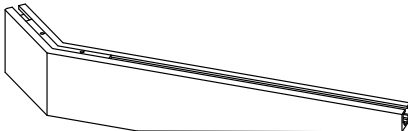


podpora półki kątowa  
shelf bracket

01.161

Materiał: aluminium anodowane  
Kolor: naturalny lub wg RAL  
Długość - Waga  
L - 300 - 0,33 kg

Materiał: aluminium  
Color: natural or RAL palette  
Length - Weight  
L - 300 - 0,33 kg

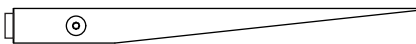


podpora półki prosta 25/15  
simple shelf bracket 25/15

01.162

Materiał: aluminium anodowane  
Kolor: naturalny lub wg RAL  
Długość: 200, 250, 300  
Waga: L 300 - 0,052 kg

Materiał: aluminium anodised  
Color: natural or RAL palette  
Length: 200, 250, 300  
Weight: L 300 - 0,052 kg



podpora półki prosta 50/16  
simple shelf bracket 50/16

01.163

Materiał: aluminium anodowane  
Kolor: naturalny lub wg RAL  
Długość: 200-400  
prawa, lewa  
Waga: L 300 - 0,19 kg

Materiał: aluminium anodised  
Color: natural or RAL palette  
Length: 200-400  
right, left  
Weight: L 300 - 0,19 kg

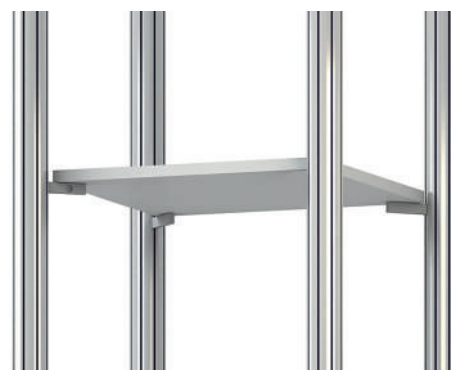
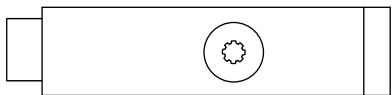


**podpora półki L-80**  
shelf bracket L-80

01.164

Material: aluminium  
anodowane  
Waga: 0,073 kg

Material: aluminium  
anodised  
Weight: 0,073 kg

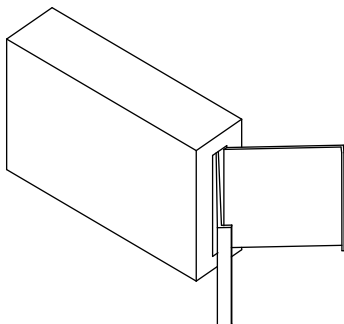


**kostka podporowa do profilu 40/40**  
support for profile 40/40

02.123.1

Material: aluminium  
Waga: 0,041 kg

Material: aluminium  
Weight: 0,041 kg

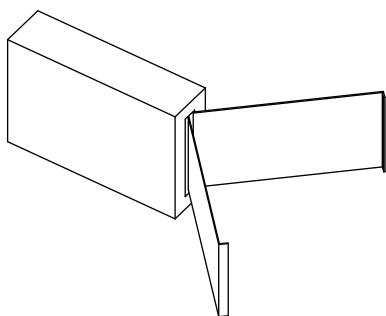


**kostka podporowa do profilu 80/80,**  
support for profile 80/80,

02.123.2

Material: aluminium  
Waga: 0,047 kg

Material: aluminium  
Weight: 0,047 kg

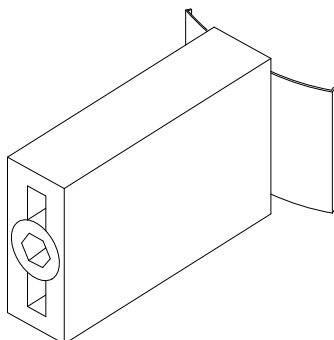


**kostka podporowa do profilu Ø 80,**  
support for profile Ø 80

02.123.3

Material: aluminium  
Waga: 0,041 kg

Material: aluminium  
Weight: 0,041 kg

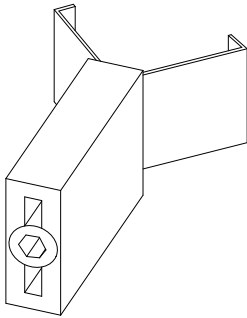


**kostka podporowa do  
profilu 100/100**  
support for profile 100/100

123.04

Material: aluminium  
Waga: 0,047 kg

Material: aluminium  
Weight: 0,047 kg

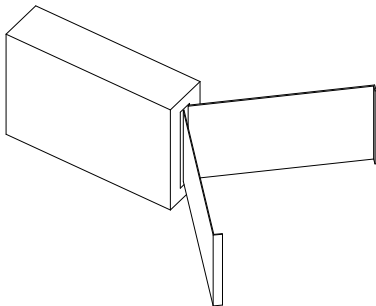


**kostka podporowa  
do 120/120**  
support for profile 120/120

123.05

Material: aluminium  
Waga: 0,047 kg

Material: aluminium  
Weight: 0,047 kg

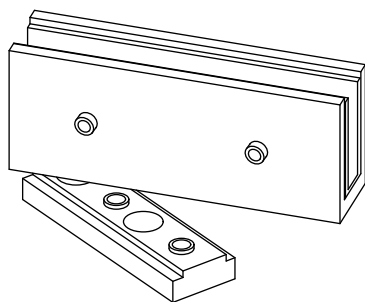


**zawias**  
hinge

01.166

Material: aluminium anodowane  
Kolor: naturalny  
Waga: 0,033 kg

Material: aluminium anodised,  
Color: grey  
Weight: 0,033 kg

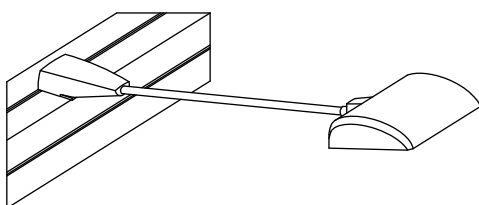


**lampa halogenowa 150W**  
halogen lamp 150W

01.177

Material: aluminium,  
Kolor: popiel  
Moc: 150 W  
Waga: 0,67 kg

Material: aluminium,  
Color: grey  
150 W  
Weight: 0,67 kg



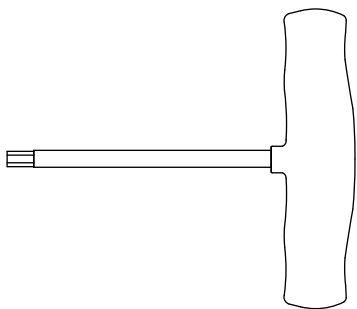
**klucz Torx 30 prosty**

Torx head wrench

Materiał: stal, tworzywo sztuczne  
Waga: 0,046 kg

Material: plastic, steel  
Weight: 0,046 kg

01.167



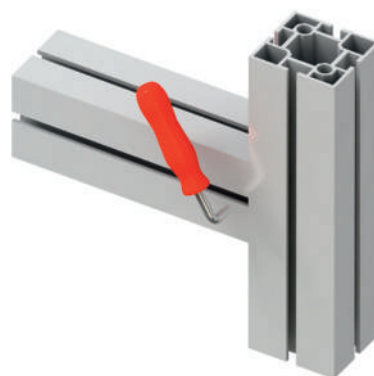
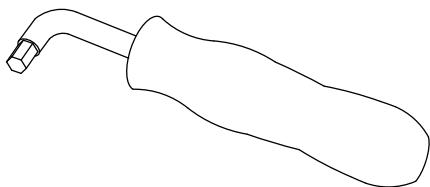
**klucz Torx 30 gięty**

Torx head wrench

Materiał: stal, tworzywo sztuczne  
Waga: Torx 0,05 kg

Material: plastic, steel  
Weight: 0,05 kg

01.168



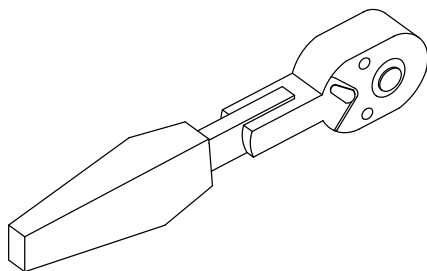
**klucz grzechotka**

ratchet without torx head

Materiał: tworzywo sztuczne, stal  
Waga: 0,073 kg

Material: plastic, steel  
Weight: 0,073 kg

01.169



**nasadka T30 długa**

Torx attachment for ratchet

Materiał: stal  
Waga: 0,024 kg

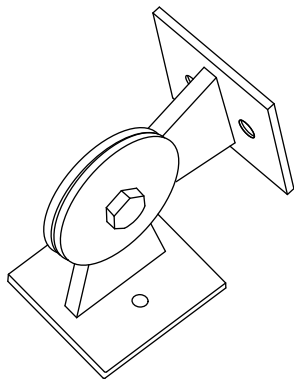
Material: steel  
Weight: 0,024 kg

02.124



### przegub do profilu

joint for profile



Material: stal  
Kolor: wg RAL  
Waga: 1,02 kg  
Do profilu: 80/80;  
100/100; 120/120;  
Ø 80

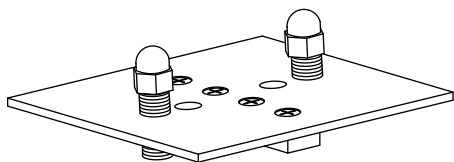
Material: steel  
Color: RAL palette  
Weight: 1,02 kg  
For profiles: 80/80;  
100/100; 120/120;  
Ø 80



02.125

### blacha mocująca przegub

plate for fixing the joint



Material: stal  
Kolor: wg RAL  
Waga: 0,017 kg

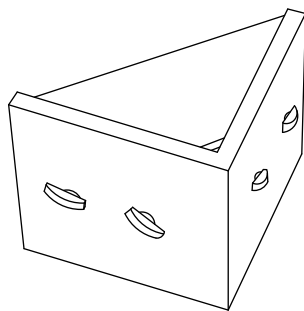
Material: steel  
Color: RAL palette  
Weight: 0,017 kg



02.126

### kątownik podporowy

supporting angle



Material: aluminium  
Kolor: wg RAL  
Waga: 0,244 kg

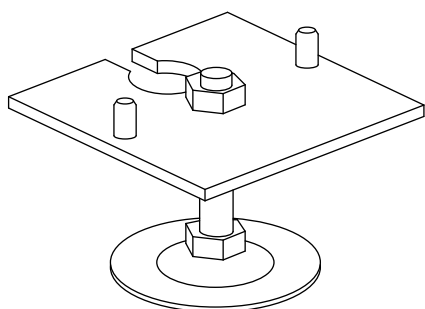
Material: aluminium  
Color: RAL palette  
Weight: 0,244 kg



02.127

### stopka regulowana

adjustable foot



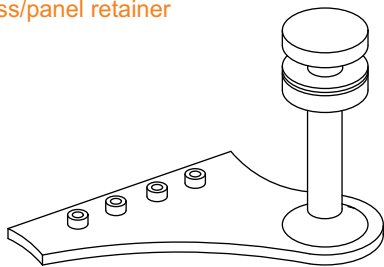
Material: stal ocynkowana  
do profilu: 80/80, 100/100  
120/120  
Waga: 0,31 kg

Material: zink coated steel  
Weight: 0,31 kg  
For profiles: 80/80, 100/100  
120/120



02.128

**uchwyt mocujący szybę pojedynczy**  
glass/panel retainer



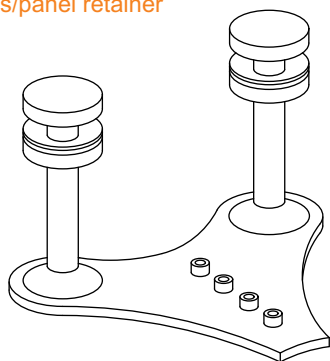
Materiał: stal ocynkowana,  
stal nierdzewna  
Waga: 0,33 kg  
prawy/lewy

**Material:** zink coated steel,  
stainless steel  
**Weight:** 0,33 kg  
right/left

02.129



**uchwyt mocujący szybę podwójny**  
glass/panel retainer



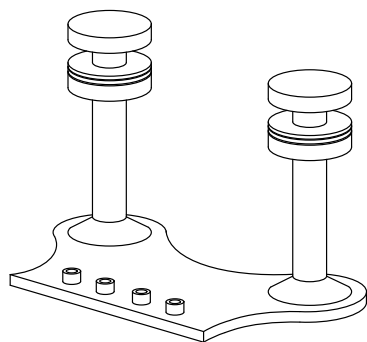
Materiał: stal ocynkowana,  
stal nierdzewna  
Waga: 0,38 kg  
górny/dolny

**Material:** zink coated steel,  
stainless steel  
**Weight:** 0,38 kg

02.130



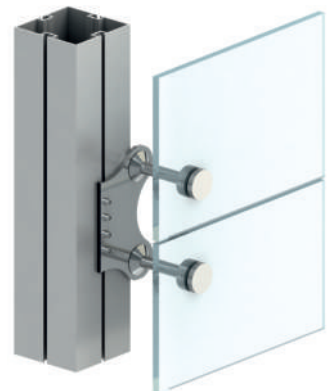
**uchwyt mocujący szybę podwójny boczny**  
glass/panel retainer



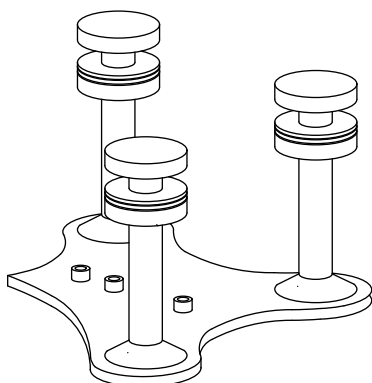
Materiał: stal ocynkowana,  
stal nierdzewna  
Waga: 0,41 kg  
lewy, prawy

**Material:** zink coated steel,  
stainless steel  
**Weight:** 0,41 kg  
left, right

02.131



**uchwyt mocujący szybę potrójny**  
glass/panel retainer



Materiał: stal ocynkowana,  
stal nierdzewna  
Waga: 0,47 kg  
prawy/lewy

**Material:** zink coated steel,  
stainless steel  
**Weight:** 0,47 kg  
left/right

02.132





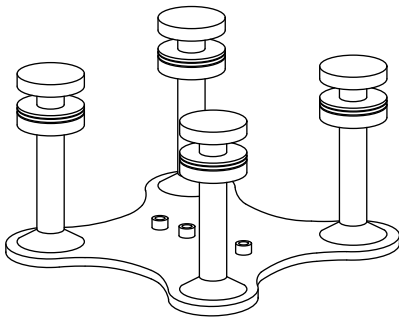
## uchwyt mocujący szybę poczwórny

glass/panel retainer

02.133

Material: stal ocynkowana,  
stal nierdzewna  
Waga: 0,55 kg

Material: zink coated steel,  
stainless steel  
Weight: 0,55 kg



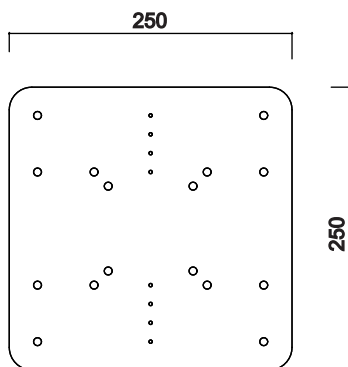
## blacha pod TV

tv plate

02.134

Material: stal  
Standard VESA  
Wymiar: 75, 100, 200,400

Material: steel  
Standard VESA  
Measurements: 75, 100, 200,400



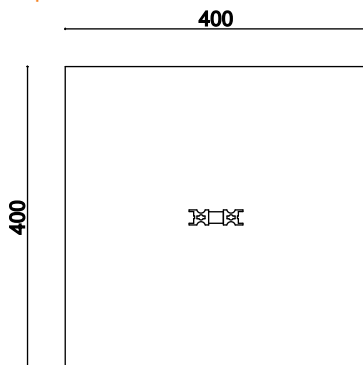
## podstawa stalowa

base plate

02.135

Material: stal  
Waga: 5,5 kg  
Do profili: 80/80,  
100/100, 120/120

Material: steel  
Weight: 5,5 kg  
For profiles: 80/80,  
100/100, 120/120



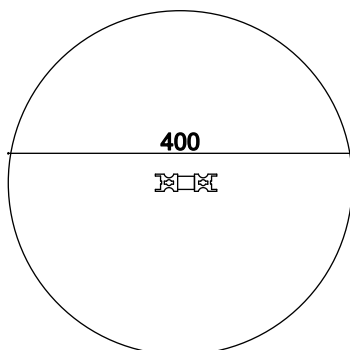
## podstawa stalowa

base plate

02.136

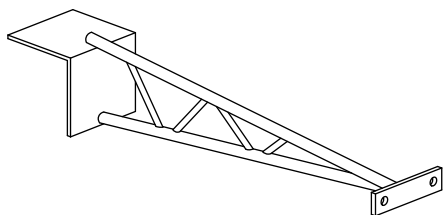
Material: stal  
Waga: 4,2 kg

Material: steel  
Weight: 4,2 kg



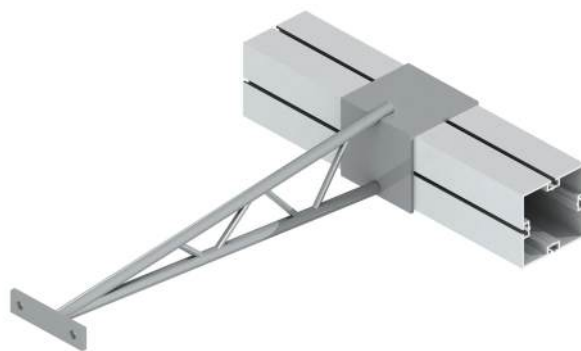
**wysięgnik metalohalogenu**  
arm for lamp

02.137



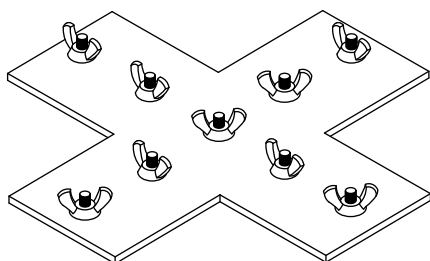
Material: stal  
Kolor: wg RAL  
Waga: 1,65 kg

Material: steel  
Color: RAL palette  
Weight: 1,65 kg



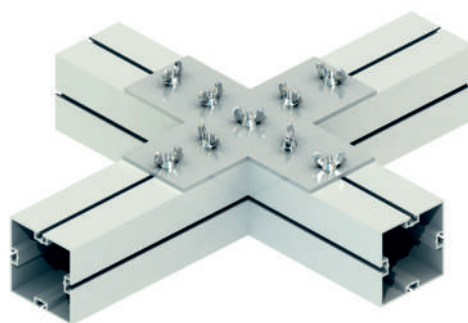
**blacha X**  
reinforcing plate X

02.138



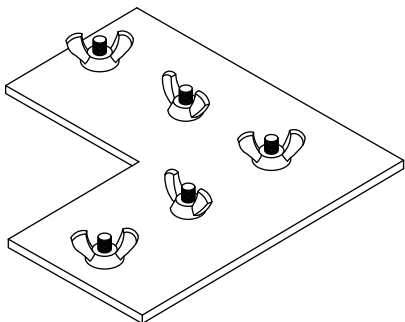
Material: stal ocynkowana  
Waga: 1,06 kg

Material: zink coated steel  
Weight: 1,06 kg



**blacha L**  
reinforcing plate L

02.139



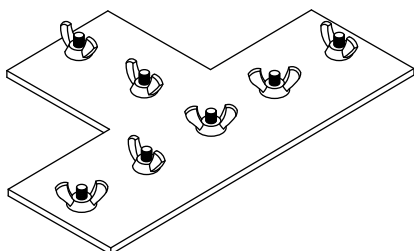
Material: stal ocynkowana  
Waga: 0,62 kg

Material: zink coated steel  
Weight: 0,62 kg



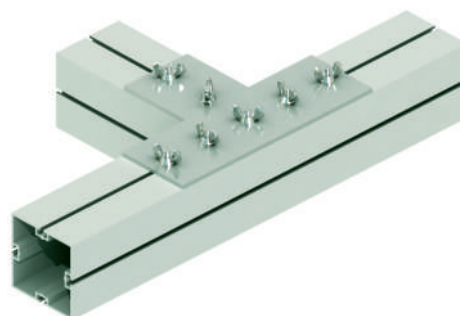
**blacha T**  
reinforcing plate T

02.140



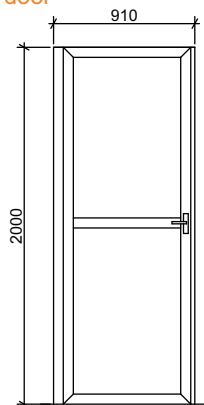
Material: stal ocynkowana  
Waga: 0,85 kg

Material: zink coated steel  
Weight: 0,85 kg



## drzwi

aluminium door



Material: aluminium anodowane  
Kolor: naturalny, lub wg RAL

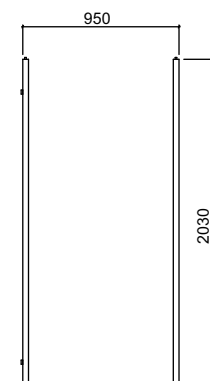
Material: aluminium anodised  
Color: natural or RAL



02.141

## ościeżnica

doorframe



Material: aluminium anodowane  
Kolor: naturalny, lub wg RAL

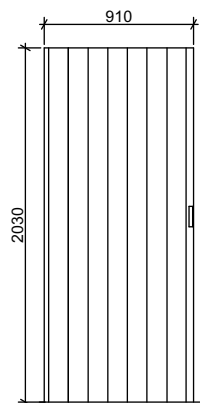
Material: aluminium anodowane  
Kolor: naturalny, lub wg RAL



01.174.2

## drzwi harmonijkowe

folding door



Material: tworzywo sztuczne  
Kolor: biały

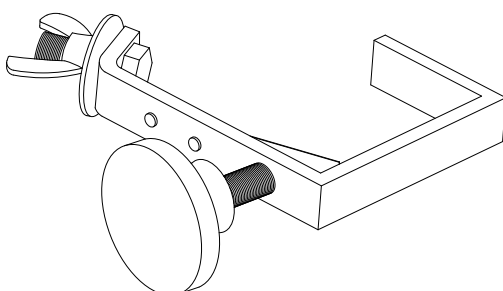
Material: plastic  
Color: white



01.176.2

## uchwyt do lampy

lighting clamp



Material: stal  
Waga: 0,31 kg

Material: steel  
Weight: 0,31 kg

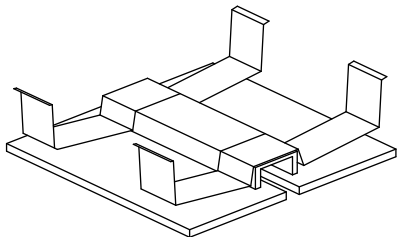


02.142

**zaślepka do 80x80**

end cap 80x80

02.143



Material: aluminium  
Kolor: naturalny, wg RAL  
Waga: 0,63 kg

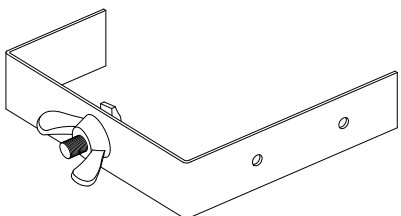
Material: aluminium  
Color: natural, RAL palette  
Weight: 0,63 kg



**zawieszka fryzu do 80**

reinforcing plate X

02.144



Material: stal ocynkowana  
Waga: 0,62 kg

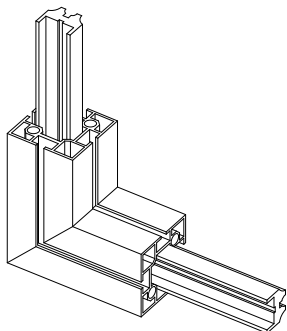
Material: zink coated steel  
Weight: 0,62 kg



**narożnik do 40x40**

beam extension 40x40

01.178



Material: aluminium  
Waga: 0,293 kg

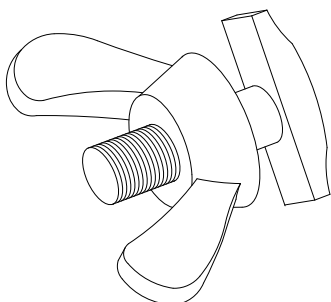
Material: aluminium  
Weight: 0,293 kg



**śruba młoteczkowa**

hammerhead screw

01.179



Material: stal  
Waga: 0,009 kg

Material: steel  
Weight: 0,009 kg

